

NEW PLACES &
FAMILIAR FACES

ANNUAL REPORT 22-23



Executive Leadership:

Heather Rae
President & CEO

John Head
Chief Medical Officer

Jeff Kapuscinski
Chief External Relations Officer

Vickie Krigner
Chief Financial Officer /
Administrative Officer

Janet Sarkos
Chief Crisis Operations Officer

Leigh Schultenover
Chief Experience Officer

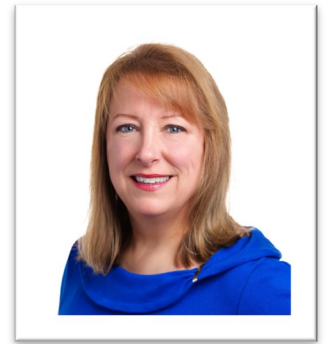
Steve Young
Chief Information Officer

HELPING PEOPLE MOVE FROM CRISIS TO HOPE



Common Ground
helping people move from crisis to hope

LETTER FROM THE PRESIDENT & CEO



Dear Friends,

Welcome to Common Ground's 2022 – 2023 Annual Report. Thank you for your support and contribution to another busy year of growth, including the launch of new programs and the expansion into new places.

Highlights from last year include expanding our services in Genesee County through an intensive mobile crisis team service model we refer to as 'ring and roll'. Simply stated, when the team receives a call for help, they get to the person as soon as possible, often within 60 minutes. Adults and children receive face-to-face community-based crisis intervention, safety planning, medication management, transportation to and from physical and mental health appointments, and connections to ongoing community-based services.

In response to another local mass violence event, this time on the campus of Michigan State University on February 13, 2023, Common Ground was approached by the state of Michigan to open a resiliency center in East Lansing. We are leveraging our experience and expertise helping the Oxford community heal from their tragedy in 2021, by establishing the United Resiliency Center which opened its doors on March 4, 2024 in East Lansing. Thankfully, much of the groundwork was laid in 2023 when we quickly responded to support the community by creating a web site, providing telephone access to crisis care, and hiring a center manager.

I hope that you've noticed Common Ground's new outreach and community awareness efforts. Last year we redesigned our web site, launched video display ads, social media and radio advertising with the assistance of Brogan and Partners.

Just two years ago, we introduced Virtual Behavioral Health Urgent Care and 988/MiCAL (Michigan Crisis and Access Line). These programs continue to serve the Oakland County community, as well as the entire state of Michigan! Common Ground served over 165,000 people in crisis last year who experienced trauma due to hardship, abuse, crime victimization, mental health challenges, and a spectrum of other circumstances. For some, we were their only source of help.

Common Ground continues to grow by meeting the needs of our community, which we couldn't do without you. Thank you again for being part of the Common Ground family and helping us help others move from crisis to hope.

Sincerely,

Heather Rae
President & CEO



Julia Aronica
Board Chair



Kay White
Immediate Past
Board Chair



Eric Dobrusin
Chair Elect

2024 — EXPANSION INTO NEW SPACES



United Resiliency Center opened in response to the February 2023 mass violence incident that took place on the campus of Michigan State University. The Center offers the opportunity for people to come together and restore their sense of well-being, and help each other move forward. This program is managed by Common Ground and funded by the state of Michigan through a Federal Antiterrorism and Emergency Assistance Program (AEAP) grant.

See more on our website:
Commongroundhelps.org / Get Help /
United Resiliency Center

More information on page 6.

UNITED RESILIENCY CENTER: A program of Common Ground
1504 E. Grand River, Suite 200, East Lansing, MI 48823

FAREWELL TO 1410

After 26 years of Common Ground's administration services: Development, Finance, Human Resources, and Executive Offices, calling the 1410 S. Telegraph location home, April 2024 brought about a change of address. We are headed into a newer complex that will provide an updated facility at a prime location.



ADMINISTRATION BUILDING

1410 S. Telegraph Road, Bloomfield Hills, MI 48309

FAMILIAR FACES HELP WITH COMMON GROUND'S ADVERTISING

Several staff members brought authenticity to our promotional video created by Brogan & Partners and Radish Productions. If you haven't seen it, take a look on our website: commongroundhelps.org/About/Mission, Vision & Values.

This video is being shared across social platforms and electronic communications, spreading the word of Common Ground's services, particularly our Virtual Behavioral Health Urgent Care.

Thank you, dedicated staff. You did a wonderful job!

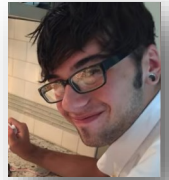




VICTIM ASSISTANCE SERVICES HELP IN UNIQUE WAYS

It has been said that there is no greater pain than losing a child. When that death occurs by homicide, the sense of heartbreak and devastation is only exacerbated by the daunting legal process that follows.

Suzanne McAfee lived this nightmare. Her 19-year-old son, Stephen, was missing for over a year and was found dead in 2017. As she prepared for what came next - the legal battles, testifying at trial, sharing stories of her beloved son, Suzanne knew she couldn't do this alone. She was grateful to meet Vivian and Chris of the Victims Assistance Program at her grief support group.



“Viv and Chris both attended the 4-week trial. They prepared me for the times when I wouldn't want to be in court, the gruesome details you don't want to sit through. They prepared us for what the actual court process would be like,” said Suzanne.



Chris Ruen
VAP Advocate

Anyone can be a victim of a crime. Donations help to ensure that victims have a place to turn in their darkest moment. Despite limited funding for our victims of crime programs, Common Ground continues to offer services and support to the vulnerable members of our community who have been directly impacted by crime. Calls keep coming in from families of homicide victims, domestic violence situations, human trafficking, and others desperate for help.

On behalf of Suzanne, and all those we serve through Victim Assistance Services, thank you for your dedication and your financial support to keep this program running.

COMMON GROUND PROGRAMS RECEIVE 3-YEAR CARF ACCREDITATION



- OACIS**— Oakland Assessment & Crisis Intervention Service
- CRU**— Crisis Residential Unit
- RCH**— Resource & Crisis Hub
- OCIRT**— Oakland Crisis Intervention & Recovery Team
- CAT**— Crisis Assessment Team

What is CARF accreditation?

Accreditation is official recognition that our organization is guided by internationally recognized service standards and best practices.

CARF accreditation consists of ongoing consultation and in-depth on-site reviews to help our organization achieve the highest quality of care for our customers.

Accreditation demonstrates that our organization has opened its service delivery and business processes to outside scrutiny to improve the quality of our programs. Accreditation is a public statement that our organization strives to ensure that our services are of the highest possible quality.

What does accreditation mean to persons served?

Accreditation demonstrates to customers that our organization is committed to reducing risk, addressing health and safety, respecting cultural and individual preferences, and providing the best possible quality of care.

Accreditation demonstrates that our agency values the input of those served, and is accountable to the community.

Accreditation demonstrates that our organization has made a specific commitment to put the needs of our residents at the center of everything we do.

Accreditation indicates that we respect the rights and individuality of the people we serve.



Sean Sylvester
Compliance Analyst

Thank you, Sean, for leading the charge on the large undertaking of earning our CARF re-accreditation in December 2023.



May's 2023 Legacy of Hope Breakfast raised \$10k for CG programs.



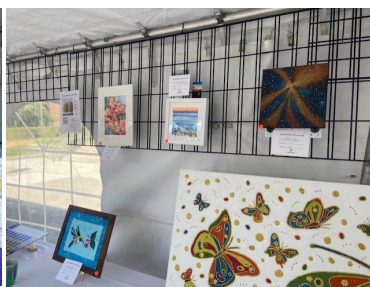
Visiting politicians tour the Resource and Crisis Center. Jake German, Congresswoman McClain, Heather Rae, Senator Mat Dunaskiss Heather Rae with Senator Stephanie Chang, Kimberly Flowers & Dana Lasenby (Oakland Community Health Network) & other mental health advocates



Anne Bradley accepts art supply donations from local student. Thank you, Reece!



Wonderful volunteers, including Kay White, helped us during the 49th Birmingham Street Art Fair benefiting Common Ground. The art fair brought in almost \$20k for our programs.



The 2023 Ride 2 End Suicide was another successful morning of riders raising funds for Common Ground and two other suicide-prevention charities. This marked the last year of Terri Jozefiak chairing the event that she and her husband, Lou started with a group of friends in 2016 in honor of their daughter, Marie. Common Ground has taken the reigns and will manage the May 18, 2024 Ride 2 End Suicide.



Jeff Kapuscinski accepts donation from Robert Wittenberg, Oakland County Treasurer. Thank you Robert!



2023 Staff & Volunteer Milestone Dinner at The Village Club in Bloomfield Hills celebrated work anniversaries and Presidential Award winners Ashley LaVictor and Marcus Cairns



Jessica Scott delivers her donation check to our Chief External Relations Officer. For years Jessica has hosted a Facials Against Suicide event at her Heavenly Days Spa, and given the proceeds to Common Ground. Thank you Jessica!

2023 Celebration of Hope Gala

Immediate Past Board Chair, Kay White and President & CEO, Heather Rae



Attentive guests listening to Victims Assistance Services presentation

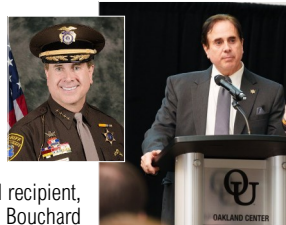


Board Chair, Julia Aronica, addresses the crowd

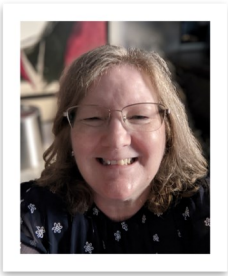
Some VIPs, including Chief Crisis Operations Officer, Janet Sarkos



Kay White Award recipient, Sheriff M. Bouchard



Kay White Award recipient, Chris Ruen. Award accepted by her daughters, Ashley & Elyse



Emily Norton
RCH Manger

RESOURCE & CRISIS HUB [800-231-1127]

The Resource and Crisis Hub (RCH) is one of the entry points into the Oakland County continuum of crisis care, where we typically speak with over 100 callers each day! As an entry point to Common Ground, our approach is to listen, care, and connect. We treat every caller with empathy, respect, and support, while empowering them to connect with internal and/or external resources.

The RHC receives a wide range of calls from people experiencing crisis. Some callers seek help for mental health concerns, others are victims of crime, or suffer from addiction, and some are concerned about other’s safety and well-being; or any number of other struggles. Our trained team has heard from grandparents concerned about their grandchildren, parents concerned about their adult children, people wanting to escape an abusive situation, individuals reeling from the loss of job or home, and from those who have been unable to get proper care and just want to be heard. The RCH is there to walk beside each caller, remind them they are not alone, and help them understand their options. Our 800# is an essential, and often only resource for many in our community, and throughout Michigan.

UNITED RESILIENCY CENTER, EAST LANSING



Jamie Ayers
Director of
Victim Services

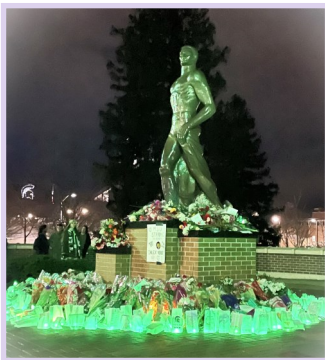
United Resiliency Center was developed to be an anchor of support following the mass violence incident on MSU’s campus in February of 2023. The goal was to open as many pathways as possible to help the East Lansing community heal. The Center’s staff takes time to listen and walk alongside everyone who walks through the door or contacts us.

Common Ground was able to respond quickly, utilizing experience from establishing the All For Oxford Resiliency Center in September 2022. This past February was the one-year remembrance to that tragic day in East Lansing. We are grateful to all of the Common Ground staff who volunteered to be in East Lansing offering support. Wyleigh was also on campus providing lots of snuggles to students and adults alike!



The All for Oxford Resiliency Center continues to support the Oxford community in their recovery. It has been an especially tough year with the second-year remembrance and court proceedings. Common Ground and Center staff continue to fill a variety of roles needed for students, parents and school staff who lean on the Center for support.

The dedicated staff and volunteers for Victim Services remains committed to providing services, not only to those impacted by mass violence, but to all victims of crime. Grants and donations are the only way we can offer these services. Thank you to all who support us and our community!



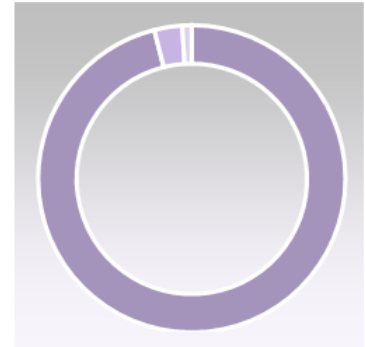
The United Resiliency team, along with other Common Ground staff, partnered with MSU and was on-site to support students and others in attendance for the 1-year remembrance.

2022-23 FISCAL YEAR FINANCIALS

Revenue, Expenses, and Impact

Your support makes a difference. During fiscal year 2022-23, over 90% of your contributions directly support services to bring people from crisis to hope.

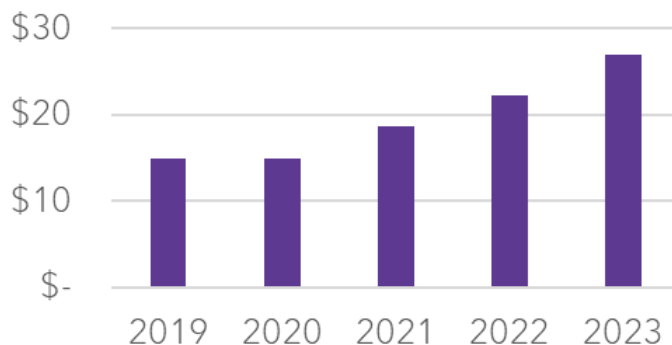
Revenue	2022-23	%
Government Contracts	\$25,897,589	96%
Gifts and Contributions	\$789,996	3%
Program and Other Income	\$269,247	1%
Total Revenue	\$26,956,832	100%



Expenses	2022-23	%
Program Services	\$24,918,026	90%
Management & General	\$2,415,436	9%
Fundraising & Development	\$416,121	1%
Total Expenses	\$27,749,583	100%

Dynamic Growth

Total Revenues (In Millions)



- Revenue increased from \$14.9M to \$26.9M, more than an 80% increase over the past 5 years.
- Our dedicated community of donors and funders, including Oakland Community Health Network, Genesee Health System, State of Michigan and federal grants, supports our mission daily, and helps us continue to provide crisis services.



GENESEE MOBILE CRISIS SERVICE (GMCS)

Common Ground signed a contract with Genesee Health Systems to begin a new program on October 1, 2023, called Genesee Mobile Crisis Services. This program serves adults, children and their families through intensive community-based crisis stabilization services and prides itself on timely mobile response throughout Genesee County, within 60-minutes. The program operates 24/7 and provides emotional support, crisis intervention, medication management, brief therapy, and resources to reduce the amount of hospital involvement for people who can be safely treated in their homes.

The GMCS team is comprised of certified peer support specialists as well as both bachelor degree staff and masters level clinicians. Recently, GMCS was able to promote two clinicians from within Common Ground, who have a wealth of knowledge in the crisis, mental health, and substance use disorder fields. The program continues an active hiring campaign, searching for exceptional and qualified candidates for all positions. GMCS looks forward to strengthening relationships throughout Genesee County with hospitals, the behavioral health urgent care, the crisis residential unit, and law enforcement agencies to provide the most comprehensive and coordinated mental health care for its residents.

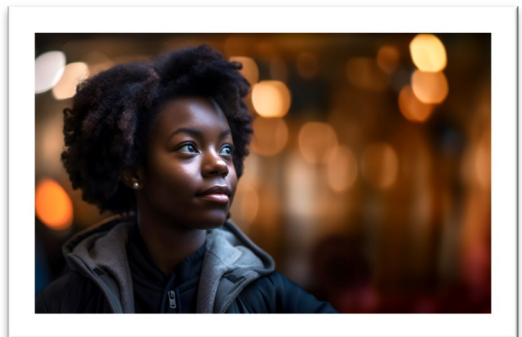


Kristin Blevins
Genesee Mobile
Crisis Services
Director

LIVING LEGACY

Hope for tomorrow

Most planned gifts are made as part of a person’s overall financial strategy. When you make a planned gift to Common Ground, you are building your legacy while ensuring we are here to help people move from crisis to hope for generations to come.



There are innumerable benefits to living legacy gifts. Not only do these gifts provide long-term support to Common Ground, but also establish your legacy as a leader in the health of our community, and often these transformational gifts cost you nothing during your lifetime. Such gifts protect your assets in the present, by reducing your tax burden and liabilities, and secure your place in Common Ground’s history and future.

Some benefits of Living Legacy Gifts:

- Make a meaningful gift that may not have been possible due to financial constraints
- Make a gift and receive guaranteed income for life
- Charitable gifts are often exempt from estate tax and/or probate costs, meaning more of the gift would go directly to Common Ground
- Transferring assets as part of a planned gift often avoids capital gains tax – for you and your heirs
- Combining planned and annual giving to maximize recognition, impact, and total commitment
- Recognition as a Living Legacy donor, including special recognition, exclusive invitations to events and personalized impact reports and updates.

When you leave a Living Legacy gift, you’re making a lasting impact on your community. Ask your financial advisor about the benefits of planned giving.



THANK YOU VBHUC SUPPORTERS!

The Virtual Behavioral Health Urgent Care (VBHUC) program has been up and running for 2 years. In that time, we have helped more than 2,200 people through our virtual platform. Now serving ages 12 and up from the comfort and privacy of their home or location of choice.

We are very grateful to the individuals and organizations who have helped us launch and maintain the program. Agencies such as the Flinn Foundation, Blue Cross Blue Shield and the Jewish Fund understand the value of the program and have helped fund this venture.



Heather Rae was one of twelve “Women Who Lead” interviewed by WJR's Paul W. Smith honoring female leaders throughout the Great Lakes region who are influencing our communities in positive ways.

LIVING LEGACY (cont.)

Some typical planned gifts may include (but are not limited to):

1. Beneficiary designations
2. Bequests, wills, and living trusts
3. Donor advised funds
4. Gifts of stock/securities
5. Charitable annuities or trusts
6. IRA Required Minimum Distributions
7. Blended gifts – adding planned gifts to annual giving.

Contact the Development Department with interest or questions:
248-653-5512
Development1@cghelps.org.



Frontline Strong team member Liz Baker hosted a Survivor Day for First Responders and Veterans in November of 2023.

Liz, a First Responder and Veteran herself, was recognized at the American Foundation for Suicide Prevention’s (AFSP) national awards ceremony. Working with First Responders and Veterans has been Liz’s mission since she began volunteering with AFSP 10 years ago.

Frontline Strong (FLS) is another program of Common Ground, with the mission of supporting first responders and their families. FLS operates 24/7/365 and is staffed with civilians and first responders trained as crisis specialists.



Liz Baker, pictured second from the left

2022—2023 VOLUNTEERS

Thank You!

Steve Applegate: Resource & Crisis Hub -
Crisis Line (RCH) & Outreach

Mary Bonds: RCH & Outreach

Sandy Betty: RCH

Amough Govind: RCH

Art Ingraham: Resource & Crisis Center
lobby liaison & Outreach

Kent Johnson: Victim Assistance Advocate

Tiffani Johnson: RCH

Sara Majoros: Survivors of Suicide Loss
Group facilitator

April Morris: Survivors of Suicide Loss
Group facilitator

Karma Haddad: RCH

Cathy Nelson: RCH

Judi Near-Hunt: RCH

Zechariah Prem: RCH

Chris Ruen: Victim Assistance Advocate

John Touhey: RCH

Kay White: RCH



HONORARY GIFTS

In Honor of Maggie Allesee

Kathleen Walgren

In Honor of Fred Fechheimer

Nina Abrams

Dennis and Peggy N. Frank

Gilda and John Z. Jacobs

Dr Luana Kyselka

Andy Meisner

Carol Pine

Sue Welch

Kay White

In Honor of Vickie Kennedy

Christine Hogan

My Positive Fitness

In Honor of Donna Kjellstrom

Mandy Kjellstrom

In Honor of Sara Majoros

Maury Okun

Peggy and Lyle Dahlberg

In Honor of Sara Majoros (cont)

Eric Dobrusin

Dr Jaime Hope

Rhonda Laurencelle

In Honor of Lynne Newman

Gumenick Family Foundation

In Honor of Emily Norton

Connie and Len Johnston

In Honor of Arvind Reddy

Sharad Puri

In Honor of Chris Ruen

Julia Aronica

Don and Susan Campbell

Judy Christie

Peggy and Lyle Dahlberg

Eric Dobrusin

Dr. Jaime Hope

Rhonda Laurencelle

In Honor of Chris Ruen (cont)

Catherine R. McNamara

Colette and Tom Stimmell

Kathleen Walgren

Wood Family Charitable Fund

In Honor of Paula Russell and Jimmy Sutton

Steven Betel

In Honor of Susan Scarlett

Mary Lou Burns

In Honor of Barbara Shoottz

Patrick Shoottz

In Honor of Kay White

Don and Susan Campbell

Cindy Frenkel

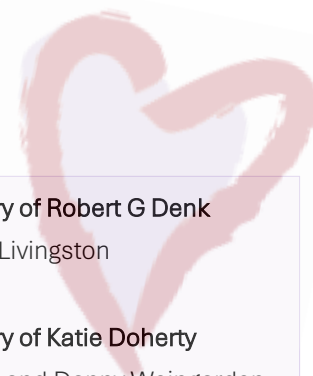
Deborah Kitson

Nancy Kollisch

Adrienne Kozlowski

George and Charlotte Meyer

MEMORIAL GIFTS



In Memory of Sara Berlin

Peter Mendler

In Memory of Mary Blocker

Kay White

In Memory of Alex Burnstein

Susan Konop

In Memory of Alan Burstein

Susan Konop

In Memory of Jimmy Dahlberg

Eileen and Dave Smith

In Memory of Lyle Dahlberg

Carol Arola

Fred Fechheimer and Roberta Platt
Philanthropic Fund

Debbie Bacal

Mary Benedetto

Barbara Bierbusse

Seba Bodden

Elaine and Bowden Brown

Gail Buhagiar

Don and Susan Campbell

John Carter

Jeff Chambers

James and Spring Clarke

Anne and Joe Cornillie

Paul Coughenour

Susan Coyle

John and Barb Dancer

Barbara and John Davenport

Pat and Mary Jane Doherty

Jacolyn Doran

Patti Durand

Jennifer Fowler

Rosemary and Tom Fox

In Memory of Lyle Dahlberg (cond.)

Steven and Carol Gates Family Fund

Christine Giancarlo

Peter & Nea Glenn Charitable Fund

Gale Gordon

Henry Grix

Elise Guidos

Mercedes S. Hershey

Paul W. and Julia Holtgreive

Susan and Jeff Hugel

Gail Katz

Carolyn Lacusta

Carole Sehn Laramie

Celeste Laramie Burris

Elaine Manix

Erin McBrien

Bruce T McConnell

Catherine R. McNamara

Carol McNaughton

Jack and Rebecca McNaughton

Dennis M. Mitzel

Cameron Moore

Colleen Nagle

G & A Piserchia

Dave and Wendy Potts

Laurie and Peter Pterneas

Donna Radich

Maria Ruzicska

Renee and Pietro Sarcina

Diane Satorius

Barbara Stafford

Teresa Sullivan

Rachel Thompson

Catharina Van Acker De Koning

Wagner Family Giving Fund

Kathleen Walgren

Kay White

Renee and Jerry White

Nan Wilberding

In Memory of Robert G Denk

Robert J. Livingston

In Memory of Katie Doherty

Mary Ann and Danny Weingarden

In Memory of Sarah Lamar duBign

Charles Abney

In Memory of Jordan Everest

Bev Bezrutch

Mark and Beth Kowalczyk

Susan and Jack Nanry

In Memory of Matison Francis

Danielle O'Mara

In Memory of Connor Gibbons

Cyndi Anderson

Tami and Steve Arens

In Memory of Andrew Golden

Brenda and Mark Altus

Katherine Jacobs

Sharad and Elizabeth Jain

Kirsti, David, Emily and

Amanda Whitten

In Memory of Roberta Gorevitz

Michael & Gail Whitty Fund

In Memory of Karen Graham

Michael Khoury

In Memory of Eugene Hartwig

Kay White

MEMORIAL GIFTS

In Memory of Rosemary Holland

Montague Foundation

In Memory of Mark Lanny Jackson

Betty Anderson

William Barris

Randy Bradford

Alan Forand

Mary Kiester

Kimberly Riemer

Marcia Riemer

In Memory of Arthur Kapuscinski

Christine Anderson

Franklin Belko

Yvonne Lewinski

Petra Martlock

Sarah and Ned Piccinni

Kay White

In Memory of Barbara Claire Killinger

Cathy Mintz

Mary Louise Porter

In Memory of Kurt Krueger

Bambi Mansfield

Grace Steiss

Susan Steiss

In Memory of Jerry Light

Stuart Raider

In Memory of Todd Little

Molly Baran

In Memory of Norma Macklin

Richard and Linda Flynn

In Memory of Corey McCourt

The June and Cecil McDole

Charitable Fund

In Memory of George Meyer

Kay White

In Memory of Meghan E Mills

Sharon McMurray-Wurtz

In Memory of Beverly Joan Moore

Mary Ann Musser

In Memory of Frank Ochberg

Moe Makki

In Memory of Steve Parks

Steve Parks Memorial Foundation

In Memory of Peter Pitchford

Ray Donnelly

In Memory of Jindrich "Henry" Plzak

Stephen Dorchak

In Memory of Clare Ramsden

Laura Bomia

In Memory of Renee & Mark

Janice Hales

In Memory of Tony Rothschild

Kenneth Whipple

Dian Wilkins

In Memory of Justin Shilling

Megan Fuller

In Memory of Mary Rose Siebold

Scott Serr

In Memory of Ted Simon

Mary Ann and Danny Weingarden

In Memory of Jessica Lynn Squarcia

Beverly Barnhouse

Rachel Einsteadig

Ronald & Renee Forman

Sandra Green

Sheldon and Marcie Weinstein

In Memory of Mike Wallad

David and Marilyn Lochner

In Memory of Rebekah Glynn Warnick

Andrew Offenbacher

In Memory of Robin Wheaton

Jackson's First Presbyterian Church

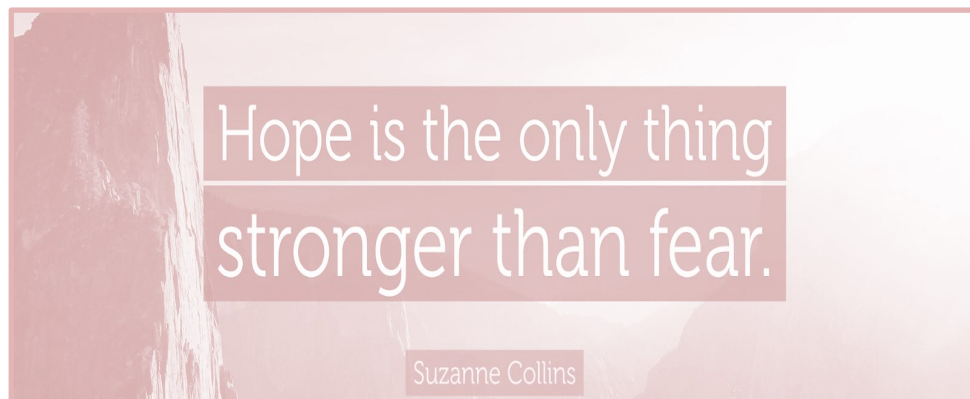
In Memory of Jody Wilson

Chemical City Derby Girls CCDG

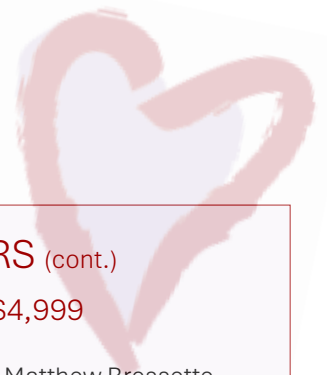
Rachel Gallagher

Tommy Riggins

Andrea Smith



LEGACY SOCIETY MEMBERS



BENEFACTORS

\$10,000 and above

Howard and Nina Abrams
Birmingham Public Schools
City of Farmington Hills
Community Foundation for Southeast Michigan
Ethel and James Flinn Foundation
Fred Fechheimer
The Harold and Marion Gordon Foundation
Lenore Hiscoe
ITC Holdings
The Jewish Fund
John & Jean Dinan Foundation
Joseph J. Laurencelle Memorial Foundation
Kemp, Klein, Umphrey, Endelman & May Foundation
Loomis, Sayles & Company, LLC
Mental Illness Resource Association
Michigan Guild of Artists and Artisans
Molinello Family Foundation
Night Shift Merchandising LLC
Oakland Together
Pulte Family Charitable Foundation
Ride 2 End Suicide
Sinai Medical Staff Foundation
Tom and Carol Beeler Foundation
Kay White

PARTNERS

\$5,000—\$9,999

Albert and Doris Pitt Foundation
Blue Cross Blue Shield of Michigan
Don and Susan Campbell
Jo Ann Cline
Corewell Health
Fred Fechheimer & Roberta Patt Philanthropic Fund
Knudsen Family Fund
The Kolasa Foundation
Susan Konop
Bruce Liebowitz
Catherine R. McNamara
Michigan Real Estate Masterminds
Mihalich Charitable Foundation
Montague Foundation
Roberta Patt
Proactive Technology Management
United Wholesale Mortgage
Wood Family Charitable Fund

LEADERS —

\$1,000—\$4,999

AmeriHealth Caritas Services LLC
Tom and Gretchen Anderson
Julia Aronica
Tracy Aronoff
Arts Beats & Eats Foundation
Beaumont Health Foundation
Bryan and Colleen Becker
Tom and Carol Beeler
The Bloomfield Hills Optimist Club
Blue Cross Complete of Michigan
Richard Blumenstein

LEADERS (cont.)

\$1,000—\$4,999

Kathryn and Matthew Bressette
Brogan & Partners
Budde Investments LLC
Douglas A. Cale
Jeff Chambers
Christ Church Cranbrook
Peggy Ciaramitaro
City of Birmingham
City of Wixom
David Clapper
Cartrenia Colbert
Ronda Coogan
The Coville-Triest Family Foundation
Peggy and Lyle Dahlberg
Jane Dallas
Julia Dawson
Debbie and John Erb Family Fund
Marjorie DeCapite
Brian M. Dietz
The Dobrusin Law Firm, PC
Stephen Dorchak
Dykema Gossett
Four Seasons Garden Center
The Fred A. & Barbara M. Erb Family Foundation
Genisys Credit Union
Giarmarco, Mullins and Horton, P.C.
Glenn and Kim Liebowitz Philanthropic Fund
Mary Glidden
Gornick Fund
Gretchen and Tom Anderson Family Fund

LEGACY SOCIETY MEMBERS

LEADERS (cont.)

\$1,000—\$4,999

GSI Electrical Services, Inc
Janet Gumenick
Carolyn Haselwood
Havenwyck Hospital
Hearst Service Center
Judi Helm
Michael Hermanoff
Delia Hoffman
Dr Jaime Hope
The Huttenlocher Group, LLC
Patrick Irwin
Jerry Knoppow & Sharon Knoppow
Charitable Fund
The June and Cecil McDole
Charitable Fund
Vincente and Sonja Jimenez
Connie and Len Johnston
Jeffrey and Joaquina Kapuscinski
Laura and Mike Kerby
Donna Kjellstrom
Vickie and Rhein Krigner
Dr . Luana Kyselka
Dr. Rhonda Laurencelle
Linda J. Zlotoff Philanthropic Fund
Lithia Motors, Inc
Frank Lymburner
Bruce T. McConnell
Jack and Rebecca McNaughton
Method Development, LLC
Meyer & Anna Prentis Family
Foundation
Michael and Janice Corrigan
Charitable Fund
Miner's Den

LEADERS (cont.)

\$1,000—\$4,999

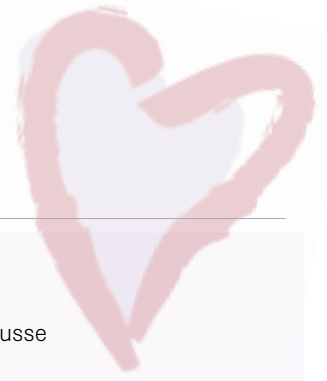
The Non-Profit Personnel
Network, Inc.
North Congregational Church
John Northcott
Oakland County Court
Administration
The O'Keefe Family Foundation
Laura Packer
Tracey Pelletier
Pharmascript of Michigan
Pop's for Italian
Leslie C. Price
Heather Rae
Rosemary Ritterhaus
Rochelle & Randolph Forester
Foundation
Susan and Richard Roth
Christine and Dennis Ruen
Saks Incorporated
Schlichting Theisen Fund
Steve and Jessica Scott
Dr. Seema Kumar Charitable
Fund
Patrick Shooltz
Yasmine Shouhayib
Steve Parks Memorial Foundation
T & P
The TJX Foundation, Inc.
Trotters Pointe Sub Division
Turn Up With Tanci
United Way For Southeastern
Michigan
Wal-Mart Foundation
Wilmot F. Wheeler
Wilkinson Foundation
Dr. and Mrs. David and Amy Wood

SUSTAINERS

\$500—\$999

Bank of America Charitable
Foundation
BIKA Solutions, LLC
BMG
Mark Bole
Lisa Bouchard
Patti Bradley
Amanda Cole
Mark G DiVitto
Isaiah Evans
Seth Adam Faber
First Independence Bank
O'neil Franso
Kathleen Fulgenzi and James
Lamoureux
Amanda Hamilton
Deborah Hecht
Hertz Schram, PC
Robert Hibbert
Michael Hicks
Debbie Hirzel
Dr. Daniel Holland
Jim Huttenlocher
James Ito
Kapnick Insurance
Kathryn Reid Charitable Giving
Fund
KIG
Jerry and Sharon Knoppow
Emily Lewis
Julie Lichtenberg Stern
Chris and Liza Liparoto
Robert J. Livingston

DONORS



SUSTAINERS (cont.)

\$500—\$999

Koreen Loncharich
Lisa Mason
Sharon McMurray-Wurtz
Carol McNaughton
Metro Parent
Michal Mikrut
Gregory Moore
Gail Morris
Molly O'Shea
Nicholas Oskay
Oxford-Addison Youth Assistance
Robert Parrish
Leon Pedell
Joyce Pippel
David B. Price
Quest Diagnostics
Anna Rea
Julie Reed
John M. Roberts
Sanctuary Birmingham, MI
Janet Sarkos
Franziska I Schoenfeld
Robert Schulz
Beverly Siegel
Siga Gailliard\Gumenick Family
Foundation
Taylor Smith
St Anastasia Catholic Church
Niki Sturm
Tom and Cindy Van Dusen
Kathleen Walgren
Douglas Wright
Xemplar Club of Farmington and
Farmington Hills
Cathleen S. Zepelin

A

Abbott Laboratories - EGC
Charles Abney
Howard and Nina Abrams
Albert and Doris Pitt Foundation
Ally Financial Inc.
Brenda and Mark Altus
AmazonSmile Foundation
AmeriHealth Caritas Services LLC
Betty Anderson
Christine Anderson
Cyndi Anderson
Deb Anderson
Tom and Gretchen Anderson
Lambros L Andreopoulos
Angel of Grace Awareness Bracelets
Tami and Steve Arens
Craig Cain Arnold
Carol Arola
Julia Aronica
Tracy Aronoff
AT&T United Way Employee Giving
Campaign
The Auto Club Group
Donna Ayers

B

Debbie Bacal
Dr. and Mrs. Jack and Susie Baker
Brenda Baker-Mbacke'
James Balmer, III
Dora Baltrusaitis
Bank of America Charitable Foundation
Molly Baran
Matthew Bariletti
Marlynn Barnes
Beverly Barnhouse
William Barris
Dianna Bartles
Roxanne Barzone
Beaumont Health Foundation
Bryan and Colleen Becker
Tom and Carol Beeler
Maureen Beirne
Lori Beirne-Kennedy
Mary Benedetto

Steven Betel
Bev Bezrutch
Barbara Bierbusse
Gail Bindi
Birmingham Public Schools
Arunava Biswas
Blue Cross Blue Shield of Michigan
Blue Cross Complete of Michigan
Richard Blumenstein
Boat Bar, LLC
Seba Bodden
Linda Bodzin
Mark Bole
Rose Bolyard
Laura Bomia
Richard Bosler
Linda Bouck
Melissa Bowman
Randy Bradford
Kathleen Bragg
Kathryn and Matthew Bressette
Sharon Bringard
Brogan & Partners
Elaine and Bowden Brown
Gail Buhagiar
Mary Lou Burns
Andrea Busa

C

Jacquelyne Cady
Don and Susan Campbell
John Carter
Pamela Catto
Deborah Field Cavanaugh
Jeff Chambers
Chemical City Derby Girls CCDG
Christ Church Cranbrook
Judy and Howard Christie
Monica Chrzaszcz
Peggy Ciaramitaro
City of Birmingham
City of Farmington Hills
City of Wixom
David Clapper
Chris Clark

DONORS

Jo Ann Cline
Cartrenia Colbert
Amanda Cole
Josie Collins
Michael and Janis Colman
Community Foundation for Southeast Michigan
Meredith Conrow
Ronda Coogan
Anne and Joe Cornillie
Costco Wholesale Corporation
Paul Coughenour
The Coville-Triest Family Foundation
Susan Coyle
Joseph W. Cunningham

D

Peggy and Lyle Dahlberg
Jane Dallas
John and Barb Dancer
Barbara and John Davenport
Julia Dawson
Debbie and John Erb Family Fund
Marjorie DeCapite
Margaret Desmond
Detroit Country Day School
Jann Devereux
Dell Dexter
Kent Dickerson
Brian M. Dietz and Debra S. Meier
Mr. and Dr. Eric and Shari Dobrusin
The Dobrusin Law Firm, PC
Autumn Dodd-Hinds
Pat and Mary Jane Doherty
Dominion Realty Services, LLC
Ray Donnelly
Jackie Doran
Stephen Dorchak
Cheryl Duff
Patti Durand
Elizabeth Durrett
Dykema Gossett

E

Ellen Ehrlich
Rachel Einsteadig

Frank and Lisa Elias
Ethel and James Flinn Foundation
Isaiah Evans

F

Dr. and Mrs. Seth and Esti Faber
Cynthia Fairless
Lesley Fairrow
Fred Fechheimer & Roberta Platt Philanthropic Fund
Andy Feinberg
Steven Fladger
Richard and Linda Flynn
Carl and Mary Ann Fontana
Alan Forand
Ronald & Renee Forman
Four Seasons Garden Center
Jennifer Fowler
Rosemary and Tom Fox
Dennis and Peggy N. Frank
O'neil Franso
The Fred A. & Barbara M. Erb Family Foundation
Cindy Frenkel
Daniel Fritz
Megan Fuller

G

Sharon Gadoth-Goodman
Siga Gailliard
Joseph Galasso
Rachel Gallagher
Michael and Laura Gannan
Robert Garretson
Patrick M. George
Chris Giancarlo
Kathryn Gleason
Glenn and Kim Liebowitz Philanthropic Fund
Mary Glidden
Arnold Goldman
Gale Gordon
Kertrina Gordon
Marvin and Sylvia Gordon
Sandra Green
Karra Greenberg
Jennifer Greenfield

Greenleaf Trust
Henry Grix
Terri Grunzweig
GSI Electrical Services, Inc
Keri Guevara
Elise Guidos
Janet Gumenick
Gumenick Family Foundation

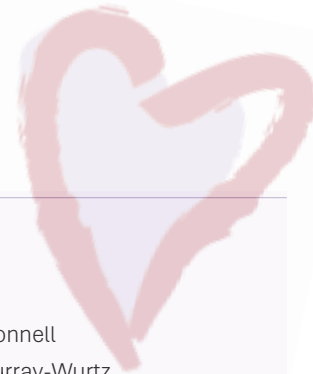
H

Ruth and Gary HaberkornHalm
Janice Hales
Amanda Hamilton
The Harold and Marion Gordon Foundation
Audrey Harvey
Havenwyck Hospital
Zoe Lynch-Healy
Larissa Heap
Hearst Service Center
Deborah Hecht
Judi Helm
Michael and Sandra Hermanoff
Mercedes S. Hershey
Hertz Schram PC
Michelle Hess
Judith Hicks
Michael Hicks
Debbie Hirzel
Lenore Hiscoe
Delia Hoffman
Christine Hogan
Malcolm R. Hohmann
Dr. Daniel Holland
Kathy Holston
Paul W. and Julia Holtgreive
Dr. Jaime Hope
Elizabeth Howaniec
Susan and Jeff Hugel
Jim Huttenlocher
The Huttenlocher Group, LLC

I

Art Ingraham
Nicki and Brian Inman

DONORS



Patrick Irwin
ITC Holdings

J

Jackson's First Presbyterian Church
Gilda and John Z. Jacobs
Katherine Jacobs
Jacobs Technology
Sharad and Elizabeth Jain
Jerry Knoppow & Sharon Knoppow
Charitable Fund
The Jewish Fund
Vincente and Sonja Jimenez
John D. and Jean E. Dinan Foundation
John and Judy Marx Philanthropic Fund
Anastasia Johnston
Connie and Len Johnston
Molly Jolls
Kristin Jones
Paula Jorne
Joseph J. Laurencelle Memorial Foundation
The June and Cecil McDole Charitable Fund

K

Margaret Kaatz
Jeffrey and Joaquina Kapuscinski
Kathryn Reid Charitable Giving Fund
Gail Katz
Carole Keller
Kemp Klein Law Firm
Kemp, Klein, Umphrey, Endelman & May Foundation
Patrick Kennedy
Laura and Mike Kerby
Michael Khoury
Mary Kiester
KIG
Karen King
Marvin and Maxine Kipp
Deborah Kitson
Donna Kjellstrom
Mandy Kjellstrom
Charles Knakal
Knudsen Family Fund
Nancy Kollisch
Susan Deutch Konop

Ruth Koppen
Kimberly Kosch
Mark and Beth Kowalczyk
Adrienne Kozlowski
Rhein and Vickie Krigner
Kroger Community Rewards
Cara Kunkel
Dr. Luana Kyselka

L

Lisa La Casse
Carolyn Lacusta
Ashley Lago
Carole Sehn Laramie
Celeste Laramie Burris
Dr. Rhonda Laurencelle
Rae Lehnertz
Lorraine and John Lenihan
Dennis and Carole Lennox
Nancy Lentini
Brenda Lever
Yvonne Lewinski
Emily Lewis
Julie Lichtenberg Stern
Bruce Liebowitz
Linda J. Zlotoff Philanthropic Fund
Lithia Motors, Inc
Robert J. Livingston
David and Marilyn Lochner
Koreen Loncharich
Jeff London
Loomis, Sayles & Company, LLC
Michael and Heather Lossing
Annie Lowy
Francis and Joyce Lymburner
Marcia Lynn

M

Moe Makki
Elaine Manix
Bambi Mansfield
Robert Marsac
Theresa Marsik
Charles Martin
Natasha Martin Verma
Petra Martlock

H.L. Mason
Lisa Mason
Erin McBrien
Bruce T McConnell
Sharon McMurray-Wurtz
Catherine and Michael McNamara
Carol McNaughton
Jack and Rebecca McNaughton
Andy Meisner
Peter Mendler
Mental Illness Resource Association
Method Development LLC
Metro Parent
George and Charlotte Meyer
Timothy Meyer
Meyer & Anna Prentis Family Foundation
Michael & Gail Whitty Fund
Michael and Janice Corrigan Charitable Fund
Michigan Guild of Artists and Artisans
Michigan Real Estate Masterminds
Microsoft Matching Gifts Program
Mihalich Charitable Foundation
Michal Mikrut
Jane Miller
Louis Miller
Miner's Den
Cathy Mintz
Dennis M. Mitzel
Montague Foundation
Cameron Moore
Gregory Moore
Amy Moore-Stinson
Gail Morris
Elaine Mull
Brittany Murphy
Kim Murphy
Mary Ann Musser
My Positive Fitness

N

Colleen Nagle
Susan and Jack Nanry
Tawana Nettles-Robinson
The Non-Profit Personnel Network, Inc.
North Congregational Church
Emily Norton

DONORS

Joel Nosanchuk

O

Oakland County Court Administration
Francis O'Donnell
Andrew Offenbacher
The O'Keefe Family Foundation
Maury Okun
Danielle O'Mara
Amy Ordon
Carol Ordon
Nicholas Oskay
Teresa Ouellette
Oxford-Addison Youth Assistance

P

Laura Packer
Jennifer Palmieri
Robert Parrish
Purvi Patel
Roberta Patt
Rhoda Paull
Leon Pedell
Benjamin Perdok
David R. Permaloff
Peter & Nea Glenn Charitable Fund
Alice Pfahlert
Pharmascript of Michigan
Sarah and Ned Piccinni
Anna Pickard
Carol Pine
Joyce Pippel
G&A Piserchia
Linda Plumhoff dba Angel Of Grace
Awareness Bracelets
Jane Polan
Mary Louise Porter
Sandra Pott
Dave and Wendy Potts
Michael Powers
Gwen Prais
Christina Pratkanicki
David B. Price
Leslie C. Price
Karen Pridmore
Proactive Technology Management

Laurie and Peter Pterneas
Sharad Puri

Q

Quest Diagnostics

R

Donna Radich
Heather Rae
Stuart Raider
John Randle Sr.
Anna Rea
Julie Reed
Suzanne and Jim Reinhart
Ride 2 End Suicide
Kimberly Riemer
Marcia Riemer
Tommy Riggins
Rosemary Ritterhaus
Eric Rizzi
Gary Robb
Julie and John Roberts
Kelly and Michael Rodgers
Susan Rogers
John Rogin
Elisa Roovers
Ellen Rosenthal
Michael Ross
Susan and Richard Roth
Royal Oak Arts Council
Dana Rozier
Barbara and Ralph Rubenstein
Joseph Rucinski
Rocco and Sheri Rucinski
Scott Rucinski
Christine and Dennis Ruen
Sarah Rusk
Maria Ruzicka

S

Saks Incorporated
Sanctuary Birmingham, MI
Michelle Sanders
Renee and Pietro Sarcina

Diane Satorius
Stephanie Saville
Lorie Savin
Matthew Schlegel
Schlichting Theisen Fund
Steve and Jessica Scott
Scott Serr
Dr. Seema Kumar Charitable Fund
Patrick Shooltz
Yasmine Shouhayib
Rachel Shuler
Beverly Siegel
Sinai Medical Staff Foundation
Carole Slotkin
Tammi Slovinsky
Andrea Smith
Douglas Smith
Eileen and Dave Smith
Eric Smith
Frances Smith
Roger Smith
Taylor Smith
Coleen Sootsman-Eicher
Dean and Anne Sousanis
Cynthia Spencer
Barbara Spreitzer-Berent
St Anastasia Catholic Church
St. Irenaeus Church
St. Mary's of the Hills, Knights of
Columbus
St. Patrick's Episcopal Church
Barbara Stafford
The Stanley L & Phyllis Berger Family
Foundation
Kara Starnes
Christopher Starr
Daniel Steinhardt
Grace Steiss
Susan Steiss
Steven and Carol Gates Family Fund
Steve Parks Memorial Foundation
Colette and Tom Stimmell
Kate Stocker
Jane Strunck
Niki Sturm
Teresa Sullivan

DONORS



T

Dorothy Tait and John V. Carr
AmyAnne Tantalo
Jennifer Tate
TC Energy
Mary Tennant
Rachel Thompson
Angela Tiura
The TJX Foundation, INC
Tom and Carol Beeler Foundation
Lauren Touleyrou
Rebecca Tron
Turn Up With Tanci

U

United Kingdom Online Giving
Foundation
United Way For Southeastern Michigan
United Way of Metropolitan Dallas
United Wholesale Mortgage

V

Catharina Van Acker De Koning
Tom and Cindy Van Dusen
Patricia Van Loo
Angela Vecore
Noel Villajuan
Carolyn Vosburg Hall

W

Wagner Family Giving Fund
Kathleen and Jon Walgren
Catherine A Walker
Walled Lake Consolidated Schools
Wal-Mart Foundation
Joel Walter
Michael Wasielewski
Anne and Jeff Watson
Diane E. Wayne
Sonny and Chris Wechsler
Lora Weingarden
Mary Ann and Danny Weingarden
Sheldon and Marcie Weinstein
Harold Weiss
John Welch
Richard Welch
Sue Welch

Wilmort and Wanda Wheeler
Kenneth Whipple
Kay White
Renee and Jerry White
Kiirsti, David, Emily & Amanda Whitten
Nan Wilberding
Dian Wilkins
Wilkinson Foundation
Brandy Willemse
Wood Family Charitable Fund
Douglas Wright and Maureen Shannon

X

Xemplar Club of Farmington and
Farmington Hills

Y

Kim Yamasaki

Z

Cathleen S. Zepelin
Kim Zernec
Leonard Zucker

THANK YOU IN-KIND DONORS

These donors gave of their resources & talents by: providing art to be auction at the Birmingham Art Fair or given to our art therapy program, donating raffle & auction items, & providing personal hygiene and comfort supplies.

Janet Alford	DIWA
Orna Amrani	Elophina LLC
Julia Aronica	Paul Fletcher
Tracy Aronoff	Fired and Fused
Astrein's Creative Jewelers	Forever Young
B&D Thread Rolling	Sherlyn Fox
Elizabeth Bacon	Reese Goldberg
Kevin Barton	Humberto Hernandez
Bear Naked Wood	Delia Hoffman
Amy Beeler	Ruth Holmes
Jerry and Carole Berhorst	Dominique Hopf
Bloomfield Library	Steven Iskenderian
Kristine Bolhuis	Paul Christopher James
Charise Bundesen	Emily Jenkins
Jeannine Caesar	Vincente and Sonja Jimenez
Nancy Cooper	Amy Johnson
Marjorie DeCapite	Jane Johnson
DiPiazza Handmade	Stephen Kade

THANK YOU IN-KIND DONORS

Chris Kamykowski
Marla Karimipour
Jan Kaulins
Kemp Klein Law Firm
John Keuvelaar
Jennifer Krcic
Sabine Krummel
Emily LoPresto
Brett Lounsbrough
Wendy Lyon
M L Wine & Spirits
Julia MacLachlan
Chris Maher
Jameson Marden
Diane Marksz
Petrus Martens
Jessica McPeck
Tamara Nottingham
Old Woodward Cellar
James Parker
Lisa Parker
Carisa Passalacqua
Purvi Patel
Jonathan Perez
PromoKarma / PromoCares
Kim Rhoney
JA Richard
Royal Oak Beaumont
Shinichi Sato
Sato Fine Art
Sonja Sheriff
Mona Sokoloff
Barbara Spraul
Sarah Stanton
Anita Stewart
Simon and Joy Tarasiewicz
Julie Tibus
Gene Turner
Allison Vasquez
Kathy Walgren
Alexa Ward
John Weller
Jay Wennersten
Chuck Wimmer
Wines For Humanity
Dr. and Mrs. David and Amy Wood
Patricia Wylie



Common Ground

helping people move from crisis to hope

1410 S. Telegraph Road
Bloomfield Hills, MI 48302



Helping People Move From Crisis To Hope

BOARD OF TRUSTEES

Julia Aronica, Board Chair
Eric Dobrusin, Chair Elect
Rhonda Laurencelle, Secretary
Don Campbell, Treasurer
Kay White, Immediate Past Chair

Tracy Aronoff
Katie Bressette
Judy Christie
Mark DiVitto
Lesley Fairrow
Fred Fechheimer
Amanda Cale Hamilton
Jaime Hope, M.D.
Cathy McNamara
Greg Moore
Tawana Nettle-Robinson
Purvi Patel
John Randle Sr.
Lisa Samerdyke
Noel Villajuan
Kathy Walgren
David Wood, Jr., M.D.

ADVISORY BOARD

Richard Astrein
Sherriff Michael Bouchard
Jerry Cavellier
Gary Dembs
Howard Hertz
Rita Margherio
John Roberts
Shelley Roberts
Kay White

LOCATIONS

Resource & Crisis Center
1200 N. Telegraph Road
Building 32 E
Pontiac, MI 48241
800-231-1127

All for Oxford Resiliency Center
1370 S. Lapeer Road
Oxford, MI 48371
248-653-5511

Administrative Office
1410 S. Telegraph Road
Bloomfield Hills, MI 48302
248-456-8150

United Resiliency Center
1504 E. Grand River
Suite 200
East Lansing, MI 48823
517-853-1070



Commongroundhelps.org