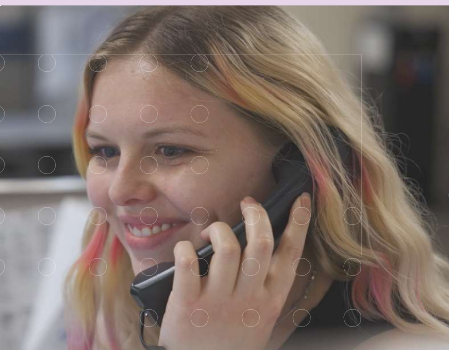
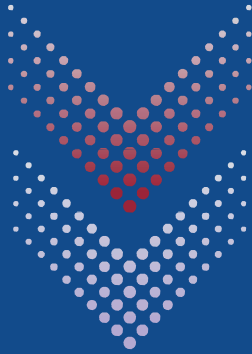


# 2024 ANNUAL REPORT



**Common Ground**  
*helping people move from crisis to hope*



*We're here for you.*

*PRESIDENT & CEO: Heather Rae  
BOARD CHAIR: Julie Aronica*

# Letter

## from the President & CEO



As I reflect on 2024, I am grateful, inspired, and committed. We served over 165,000 people through our crisis programs such as the 988 Suicide & Crisis Lifeline, Behavioral Health Urgent Care, our services in the Resource & Crisis Center, Genesee County mobile crisis teams, and other emotional support services. I am inspired by the dedication of staff and volunteers who work around the clock to assist people in crisis and the first-responder community who we stand with side by side. I am also inspired by the courage of individuals who seek help in their moments of crisis.

Growth in 2024 included the launch of a new program and expansion into new areas. On June 15, 2024, our Victims Assistance Program (VAP) team responded to a mass shooting at the Brooklands Plaza Splash Pad in Rochester Hills. The Oakland County Sheriff's Department called upon us, and we promptly provided crisis support at area hospitals. Recently, we opened the Rochester Hills Resiliency Center near the incident site to aid in community recovery and healing.

We made a commitment to our future by relocating our administrative office to Bingham Farms, which offers more space for community meetings, training, collaboration, and future growth.

You will learn more about Australian Deputy Chief Psychiatrist Dr. Melanie Turner's visit to the Resource & Crisis Center, the Victim Assistance Program team's involvement in the NFL Draft human trafficking sting operation, and recognition of staff members for mental health advocacy, among other highlights in this report.

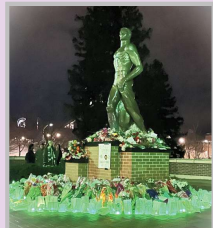
We acknowledge the contributions of our partners, donors, Board of Trustees, and staff who enable rapid response to community needs. Your support remains crucial in helping people move from crisis to hope.

Sincerely,





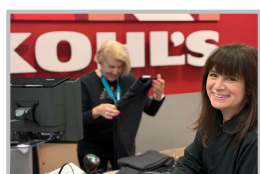
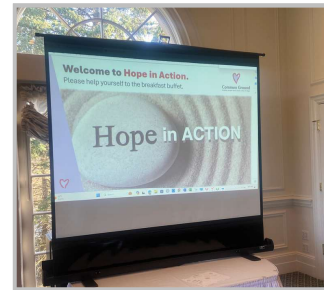
# Highlights from 2024



**Feb 2024 - Common Ground's United Resiliency** team supported attendees of the MSU's Day of Remembrance, acknowledging the one year anniversary of the February 13, 2023 mass violence event in E. Lansing.



**April 9th - Hope in Action Breakfast** filled the Heather's Club of Bloomfield with local influencers and mental health advocates.



**Generous donations** of coats and clothes from Kohl's Department Store and Oakland Community Health Network (OCHN) for our Victim Assistance Program.



**August 2024 - Moved into new Administration Office Building:**  
30200 Telegraph, Ste. 300, Bingham Farms



**September 28-29th - 50th Annual Birmingham Street Art Fair** attracted art aficionados and families to enjoy art of all kinds, as well as activities for the kids. Our Silent Auction (donated art pieces from Fair vendors) raised funds for Common Ground programs.

**October 18th - Celebration of Hope Gala** drew a large crowd of almost 200 Common Ground advocates, sponsors & donors. Over \$100,000 was raised through ticket sales, sponsorships, silent auction, and the (Hope) paddle-raise. Sara Majoros and Terri Jozefiak were honored with the Kay White Legacy Award.



## May 18th - Ride 2 End Suicide.

The 9th annual Ride and first year of Common Ground managing the event. With the help of the community, we raised \$40,000 for suicide awareness and prevention.



Dr. Kim Smith (above) was honored for her contributions to the 2024 Black Youth Suicide Policy Academy.



**December 3rd - Common Ground's annual Staff & Volunteer Milestone Dinner** celebrated staff members and volunteers with milestone anniversaries. President & CEO Heather Rae chose Stephanie Trueter as the Presidential Award recipient and honored Kay White for her 40 years of volunteer service.





## VICTIM ASSISTANCE PROGRAM

In April 2024, Homeland Security Investigations (HSI) Victim Services led a multi-agency sex trafficking operation in conjunction with the NFL Draft in Detroit, Michigan. Common Ground's Victim Assistance Program - Human Trafficking Team was asked to participate.



Common Ground's Victim Advocates were stationed at a Detroit area hotel with HSI agents from Michigan and Ohio. HSI Advocates led the charge when suspected victims were escorted into a room. The first step was a conversation with a forensic interviewer inquiring about the individuals' experience and determining if they were there by choice or by force, fraud, or coercion. Then, Common Ground advocates were able to share information about our Victim Assistance Program and available services and resources.

Advocates also discussed the individuals' immediate and long-term needs, offering them tangible items and contact information for continued help. Though unsettled at the onset of the interactions, the trafficking victims walked away from the operation with aid, resources, and awareness of the support from law enforcement and victim advocacy at Homeland Security and Common Ground.

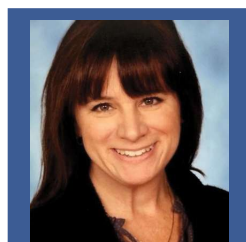


The Victim Assistance Program (VAP) helps victims of violent crimes at no cost to them, therefore our program relies heavily on public and private donations. VAP Supervisor, Laura Gemellaro offers her heartfelt thanks for this continued support, as well as to Homeland Security of Detroit for integrating Common Ground's program into their operation for this specific event. Your donations and partnership enable Common Ground to make a significant impact in assisting victims of crime, helping them move from crisis to hope.

- If you suspect that you've witnessed any form of human trafficking, please report it immediately to the 24/7 National Human Trafficking Hotline toll-free at 1-888-373-7888. All communication with the hotline is completely confidential.
- You can also text the National Human Trafficking Hotline at 233733. Message and data rates may apply.

*\*Human Trafficking is defined as "the business of stealing freedom for profit. In some cases traffickers trick, defraud, or physically force victims into selling sex. In others cases, victims are lied to, assaulted, threatened or manipulated into working under inhumane, illegal or otherwise unacceptable conditions." (Polaris, 2025)*

Laura Gemellaro  
VAP Supervisor



Jamie Ayers  
Director of Victim Services







**Dr. Melanie Turner**



Dr. Turner met with Ethan Ogans, Sober Support Unit Manager, and many other Common Ground staff members.

Dr. Melanie Turner, a leading research psychiatrist from Australia and the Deputy Chief Psychiatrist at the Office of the Chief Psychiatrist of South Australia, recently visited Common Ground. Dr. Turner won a research grant (from the Winston Churchill Trust) that allowed her to travel the globe in pursuit of perspectives from psychiatric treatment programs that she could bring back to Australia.

Dr. Turner is studying non-hospital alternatives for crisis work and long-term suicide risk mitigation. She learned of Common Ground through Dr. Phillip Hunter (Common Ground's Crisis Residential Unit Director) and requested a tour and the opportunity to speak with Common Ground staff to learn about our programs. We were privileged with the opportunity to exchange success stories, challenges, and ideas.



**Dr. Phillip Hunter**

Other stops that Dr. Turner made in the United States included Harvard, the New York Office of Behavioral Health and Northwell Mental Health Services. Dr. Turner also traveled overseas, including James Place in Great Britain, Switzerland, and the Netherlands. That places Common Ground among some elite company! Thank you Dr. Turner.



Michigan Department of Health & Human Services



**Dr. Kim Smith**  
Manager of BHUC

Michigan Department of Health and Human Services assembled a team of professionals and advocates to travel to Washington D.C. to work closely with mental health content experts. This team represented the State of Michigan at the 2024 Black Youth Suicide Policy Academy hosted by the Substance Abuse and Mental Health Services Administration.

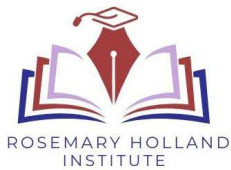
That group included Common Ground's Behavioral Health Urgent Care manager, Kim Smith, PhD. Great work, Dr. Smith.



## Rosemary Holland Institute



It's been an exciting year for training activities at Common Ground, especially now that we have a beautiful, dedicated training space at our new administrative office location. The training space is bright and engaging with floor to ceiling windows and plenty of space to practice physical skills. We especially love the special entrance with a new sign proudly displaying the Rosemary Holland Institute, and the lovely portrait of Rosemary Sheridan Holland.



Rosemary was a passionate supporter of programs to help those in crisis and a long-time member of Common Ground's Board of Trustees. She is survived by her husband Fred Fechheimer and two adult sons. We are extremely grateful for the support of the Fechheimer family, the Board of Trustees, and many other benefactors who support essential training and professional development for our growing workforce.



Rosemary Holland

Since we began in the Fall of 2024, we have offered 28 classes focused on Behavioral Health Safety Techniques and De-escalation. Thanks to the Rosemary Holland Institute, we are also able to incorporate specialized, advanced techniques and best practices to keep everyone safe, even during the highest level of crisis-response.

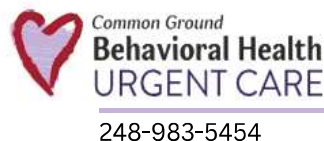
This past year we were able to send eleven staff members to the State of Michigan Peer Conference, where participants were able to earn continuing education credits for their recertification. Certified Peers play an essential role in our programs, and they are now required to be recertified every two years. We are also grateful for the ability we had to upgrade our learning management system. At Common Ground, our employees are required to take many hours of field-related and professional continuing education credits; the upgraded library allows us to update classes with relevant content, making it possible for our licensed professionals to take continuing education credits at no personal cost.



The need for well-equipped behavioral health professionals remains critical. Having the support of the Rosemary Holland Institute allows Common Ground to keep up with changes and better equip our staff to help more people move from Crisis to Hope.



# Program highlights



Behavioral Health Urgent Care (BHUC) is now in its third year. This virtual platform provides online mental health services for ages 12 and above from the privacy and comfort of their homes or location of choice. We have helped more than 2,700 people!

Thank you to all of the donors and organizations who have made this program a reality. We acknowledge the following agencies and individuals whose funding helps support BHUC: Flinn Foundation, Blue Cross Blue Shield of Michigan, the Jewish Fund, and Lorrie D'Angelo.



Michigan Crisis and Access Line (MiCAL) is a 24/7 statewide crisis support, referral, and information resource serving Michigan residents in mental or emotional distress. MiCAL includes a Peer Warmline for people with more persistent mental health needs who benefit from additional support and Frontline Strong Together, a program specifically designed to serve the first responder community.



988 SUICIDE & CRISIS LIFELINE is a 24/7 resource for urgent, critical situations. Call, Text, or Chat 988 to be connected to a trained specialist who will listen, provide support, and connect people to additional resources. Callers are welcome to remain anonymous



THE MICHIGAN PEER WARMLINE connects Michigan residents living with persistent mental health and/or substance use conditions to Certified Peer Support Specialists. These empathic coaches have experienced behavioral health issues, trauma, or personal crises themselves, and have received crisis training which enables them to support and empower callers. The Michigan Peer Warmline operates 7 days a week 10am-2am.



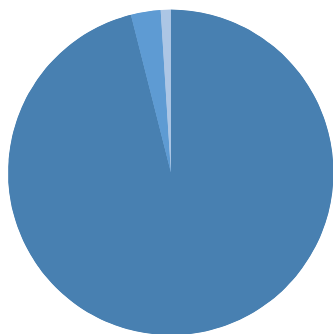
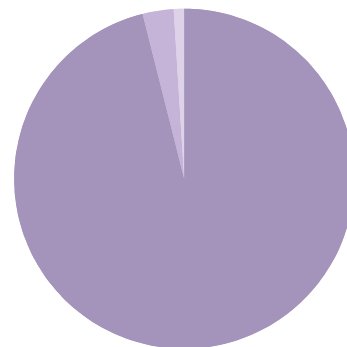
FRONTLINE STRONG TOGETHER is free, confidential specialized support for first responders and their families. Frontline Strong operates 24/7/365 and is staffed with first responders trained as crisis specialists. Responder-focused mental health therapy, peer support groups, substance abuse rehabilitation, and many other resources are offered.

## Revenue, Expenses, & Impact 2023-24 Financials

Your support makes a difference.

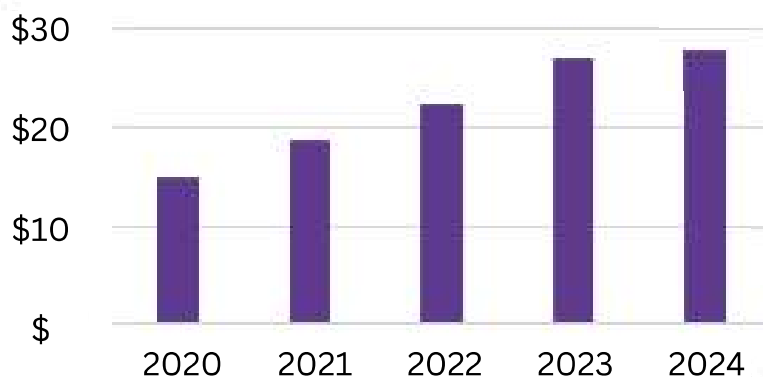
During fiscal year 2023-2024, 90% of your contributions directly supported program services - helping people move from crisis to hope.

Revenue	2023-24	%
Government Contracts	\$26,970,350	96%
Gifts and Contributions	\$728,621	3%
Program and Other Income	\$343,470	1%
<b>Total Revenue</b>	<b>\$28,042,441</b>	<b>100%</b>



Expenses	2023-24	%
Program Services	\$25,982,307	90%
Management & General	\$2,339,468	8%
Marketing & Fundraising	\$431,473	2%
<b>Total Expenses</b>	<b>\$28,753,248</b>	<b>100%</b>

**Total Revenues (In Millions)**



### Dynamic Growth

Revenue has grown from  
\$14.9M to \$28M -  
more than an 88% increase  
over 5 years



# Common Ground Programs

- SUICIDE & CRISIS LIFELINE - 988
- RESOURCE & CRISIS HUB - 800.231.1127
- BEHAVIORAL HEALTH URGENT CARE - VIRTUAL
- MICHIGAN PEER WARMLINE
- MOBILE CRISIS TEAMS
- VICTIM ASSISTANCE PROGRAMS
- RESILIENCY CENTERS: OXFORD, E. LANSING, & ROCHESTER HILLS
- FRONTLINE STRONG - FIRST RESPONDER SUPPORT
- WALK-IN CRISIS ASSESSMENT & CRISIS INTERVENTION SERVICES
- CRISIS RESIDENTIAL UNIT
- SOBER SUPPORT UNIT
- SURVIVORS OF SUICIDE LOSS SUPPORT GROUP
- SURVIVORS OF HOMICIDE LOSS SUPPORT GROUP

## Planned Giving

### PLANNED GIVING HELPS PROTECT COMMUNITY PROGRAMS AND HELPS SECURE COMMON GROUND'S FUTURE.

#### Ways to Give Now:

- STOCKS & SECURITIES
- DONOR ADVISED FUND OR PRIVATE FOUNDATION
- TRADITIONAL IRA CONTRIBUTIONS
- REAL ESTATE

#### Ways to Give as Part of Your Estate:

- WILL OR BEQUESTS
- LIFE INSURANCE BENEFICIARY
- IRA OR RETIREMENT ACCOUNTS BENEFICIARY DESIGNATION
- CHARITABLE ANNUITY OR TRUST

All contributions help ensure that Common Ground continues to provide high-quality critical mental and behavioral health services to Michigan residents. Making a cash donation is always appreciated. Planned Giving is another option, and can make an impact during your lifetime and for generations to come.



- A planned gift may provide tax benefits for you or your estate and is a meaningful way to leave a legacy.
- Considering a planned gift? Please consult with your financial advisor.

Common Ground's Development team is available to discuss planned giving options.

Phone: 248.451.3733 | E-Mail: [abradley@cghelps.org](mailto:abradley@cghelps.org)



# Volunteers

## honored



Latesia **Anderson-Wigner**: R2ES  
 Steve **Applegate**: Art Fair, Outreach  
 Julia **Aronica**: Board Chair  
 Tracy **Aronoff**: Board Member  
 Richard **Astrein**: Advisory Board Member  
 Mary **Balsam**: R2ES  
 Kyle **Beaudrie**: Celebration of Hope  
 Nathan **Benedict**: Celebration of Hope  
 Catrina **Berry**: R2ES  
 Mary **Bonds**: R2ES, Outreach  
 Michael **Bouchard** (Sheriff): Advisory Board  
 L.J. **Bratton**: R2ES  
 Katie **Bressette**: Board Member  
 Dinah **Brinson**: R2ES  
 Mel **Bryan**: R2ES  
 Wendy **Carek**: R2ES  
 Amanda **Carlini**: R2ES  
 Vince **Carter**: R2ES  
 Yvonne **Cartwright-Calloway**: R2ES  
 Deborah **Cavanaugh**: Art Fair, R2ES  
 Jerry **Cavellier**: Advisory Board Member  
 Brittany **Covington**: Celebration of Hope  
 Delano **Covington**: Celebration of Hope  
 Nicole **Davenport**: Art Fair  
 Gary **Dembs**: Advisory Board Member  
 Mark **DiVitto**: Board Member

R2ES = Ride 2 End Suicide fundraising event  
 RCH = Resource & Crisis Hub  
 SOH = Survivors of Homicide Loss  
 SOS = Survivors of Suicide Loss

Eric **Dobrusin**: Board Member  
 Melanie **Esland**: Board Member  
 Lesley **Fairrow**: Board Member  
 Fred **Fechheimer**: Board Member  
 Bill **Ferguson**: R2ES  
 Evelynnn **Garza**: R2ES  
 Edward **Gibbs**: R2ES  
 Brian **Gomolski**: Celebration of Hope  
 Christine **Griffin-Fox**: R2ES  
 Katy **Hall**: Victim Assistance Program  
 Mandy-Cale **Hamilton**: Board Member  
 Nancy **Henahan**: R2ES  
 Lisa **Hendricks**: R2ES  
 Howard **Hertz**: Advisory Board Member  
 Marisa **Hunter**: Art Fair  
 Art **Ingraham**: Art Fair, Outreach  
 Dr. Jaime **Hope**: Board Member  
 Kent **Johnson**: Victim Assistance Program  
 Tiffani **Johnson**: RCH Crisis Specialist  
 Terri **Jozefiak**: R2ES Committee & Founder  
 Bethany **Kauth**: Celebration of Hope  
 David **Konop**: Committee Member  
 Kimberly **Langworthy**: R2ES  
 Corbin **LaParl**: Committee Member  
 Shane **LaParl**: Committee Member  
 Rhonda **Laurencelle**: Board Member  
 Tanie **Lee**: Celebration of Hope  
 Emily **Loder**: Celebration of Hope  
 Sara **Majoros**: SOS Grp Facilitator  
 Rita **Margherio**: Advisory Board  
 Lisa **Mason**: Committee Member  
 Suzanne **McAfee**: SOH Support  
 Catherine **McNamara**: Board Member

Felicia **Milam**: R2ES  
 Greg **Moore**: Board Member  
 Judi **Near-Hunt**: RCH Crisis Specialist  
 Anne **Neschal**: Committee Member  
 Catherine **Otero**: R2ES  
 Naiya **Patel**: Celebration of Hope  
 Purvi **Patel**: Board Member  
 Lauren **Phillips**: Crisis Support Liaison  
 Ben Polan: R2ES  
 John **Randle Sr.**: Board Member  
 John **Roberts**: Advisory Board Member  
 Shelley **Roberts**: Advisory Board Member  
 Chris **Ruen**: Victim Assistance Program  
 Lisa **Samerdyke**: Board Member  
 Trevor **Schick**: R2ES  
 Marisa **Seltzer**: Art Fair  
 Desmond **Smith**: Board Member  
 Colette **Stimmel**: Committee Member  
 Montana **Svoboda**: R2ES  
 Paul **Toepp**: Committee Member  
 Jackie **Tomeschko**: Committee Member  
 Alexis **Travis**: Board Member  
 Winter **Upson**: R2ES  
 Noel **Villajuan**: Board Member  
 Kathleen **Walgren**: Committee Member  
 Cheri **Werk**: R2ES  
 John **Werk**: R2ES  
 Kay **White**: Advisory Board, RCH  
 Marc & Joann **Wilford**: Art Fair  
 Kiara **Wilkie**: Art Fair  
 Joanna **Wood**: Committee Member  
 Christopher **Yankoulides**: R2ES

## Donors

### HONORARY GIFTS

**In Honor of Julie Aronica**  
 Kay White

**In Honor of Phyllis Boniface**  
 Emily Lewis

**In Honor of Anne Bradley**  
 Brian Zech

**In Honor of The Cale Family**  
 Eric Cale

**In Honor of Don Campbell**  
 Peter Robinson  
 Kay White  
 Kirco Manix Construction

**In Honor of Judith Christie**  
 Jill Christie

**In Honor of**  
**Howard and Judith Christie**  
 Lance and Marguerite Krajacic

**In Honor of The Dahlberg Family**  
 Colleen Nagle

**In Honor of Marjorie Decapite**  
 Pamela Catto  
 Jay Reynolds

**In Honor of Gary Dembs**  
 Jan Dembs  
 Howard Dembs  
 Lawrence Katz

**In Honor of**  
**Annie Dennis and Luke Litwinowicz**  
 Tim Dennis  
 Ron Harlow  
 Marie Monendo  
 Anne Parisot

**In Honor of Fred Fechheimer**  
 Joel and Betsy Kellman  
 David Konop  
 Jane Miller

**In Honor of Cecelia Garofoli**  
 Christine and Joe Garofoli

**In Honor of Pallavi Joshi**  
 Shaunalin Murphy

**In Honor of Vickie Kennedy**  
 Connie and Len Johnston

**In Honor of Susan Konop**  
 David Konop

**In Honor of Sara Majoros**  
 Jo Ann Cline

**In Honor of Sara and Steve Majoros**  
 Maury Okun





## HONORARY GIFTS

**In Honor of**  
**Oakland Community Health Network**  
Suzanne Weinert

**In Honor of Heather Rae**  
Kay White

**In Honor of Eric Riley**  
Mark Riley

**Honor of Christine and Dennis Ruen**  
Matthew and Kathryn Bressette  
Lisa Mason  
Kay White

**In Honor of Aparna Sriram**  
Sriram Srinivasan

**In Honor of Gary Swilling**  
Susan Erichsen

**In Honor of Tim and Jake**  
Jill Begerowski

**In Honor of Vanessa H.S.**  
Jimmy Freedom

**In Honor of Kathy Walgren**  
Pamela Catto  
Kelly Hillman

**In Honor of Jane Walters**  
Christine Lynn

**In Honor of Deb Westman**  
Gail Esker

**In Honor of Kay White**  
Gary and Jan Dembs  
Adrienne Kozlowski  
Julie Litchenberg Stern

**In Honor of Gail and Michael Whitty**  
Bert Whitehead

**In Honor of Zack**  
Marie Michael

**In Honor of Zevi's Birth**  
Jay Must Family Fund

**In Memory of Steven Beale**  
Jerry and Gail Beale

**In Memory of Luke Bell**  
Nanci and Allen Einstein

## MEMORIAL GIFTS

**In Memory of Steve Briesmeister**  
Vicky Patrick

**In Memory of Molly Brodak**  
Nora Tavalieri

**In Memory of Dave Burch**  
Susan Konop

**In Memory of Ellen Cale**  
Jennifer Ball

**In Memory of Ron Coden**  
Susan Konop

**In Memory of Jimmy Dahlberg**  
Eileen and Dave Smith

**In Memory of Lyle Dahlberg**  
Bruce McConnell

**In Memory of Armando DeCapite**  
Marco DeCapite

**In Memory of Justin Michael DeKruif**  
Donna DeKruif

**In Memory of Rachelle Domke**  
The Ben and Colleen Perdock Fund

**In Memory of Vickie Duncan**  
Meaghan Brandow

**In Memory of Alice Ehrinpreis**  
Dr. Murray Ehrinpreis

**In Memory of Thomas Ernst**  
Jay Reynolds

**In Memory of Todd Forester**  
Therese Jean

**In Memory of John Giacoletti**  
Kay Giacoletti

**In Memory of Mary Rogers Grose**  
Cathleen Zepelin

**In Memory of Brandon Hale**  
Mercedes Hershey

**In Memory of Nathan Honey**  
Bridgette Brozovic  
Mary Sheila Garin

## MEMORIAL GIFTS



**In Memory of Justin Jackowicz**  
Christa Jackowicz  
Dave Jackowicz  
Dennis Jackowicz  
Diane Jackowicz  
Jessica Jackowicz

**In Memory of Marie Jozefiak**  
Louie Ajini  
Kathryn Baker  
Sandra Black  
Nancy Coyne  
Bernadette Faith  
Gary Haberkornhalm  
Matthew Harthcock  
Rebecca Harwell  
Tammy Hatfield  
Kristine Hopfensperger  
Rick Lewandowski  
Craig Tobey  
Robin Westenburg  
Richard Ziegler

**In Memory of George Meyer**  
Kay White

**In Memory of Thomas Labrenz**  
Shirley Labrenz

**In Memory of Corey McCourt**  
The June and Cecil McDole  
Charitable Fund

**In Memory of Adam McDaniel**  
Nicole Alessi-Forgach

**In Memory of Eric Nicholson**  
Sanford Nicholson

**In Memory of Jane Ellen Northcott**  
John Northcott

**In Memory of Robinson Ordona**  
Amy Ordona

**In Memory of George Orley**  
Steve and Yvonne Langdon

**In Memory of Joseph Palmisano**  
Guidant Global

**In Memory of Steve Parks**  
Hana Kilar



## MEMORIAL GIFTS

**In Memory of Kyle Peavey**  
Judy and Ted Olds

**In Memory of Brenna Pelerin**  
Mark Davidoff

**In Memory of Nicholas Pelletier**  
Jason Bennett  
Todd Catchpole  
Don Duke  
Sheri Godman-Lumley  
Randal Harris  
Margaret McKenzie  
Carolyn Pelletier  
Tracey Pelletier  
Meghan Trezies-Pelletier  
Tamara Zelinski

**In Memory of Jindrich "Henry" Plzak**  
Colleen Barkham

**In Memory of Randy Priest**  
Karen Miller

**In Memory of Bill Radabaugh**  
Jennifer Arnold  
Dana Boyette  
Kurt Schultz  
Gene Williams

**In Memory of Tony Rothschild**  
Kathleen Fulgenzi & James Lamoureux  
Dian Wilkins

**In Memory of Susan Shea**  
Laurie Hix

**In Memory of Mary Rose Siebold**  
Scott Serr

**In Memory of Jeanna Smelser**  
Jennifer Gavin

## MEMORIAL GIFTS

**In Memory of Ronnie Smelser**  
Jennifer Gavin

**In Memory of Tom Steding**  
Patricia Steding

**In Memory of Lex Van Acker**  
Carin and Wim Van Acker

**In Memory of Patrick VanderVeen**  
Aaron Schwam  
Stephen VanderVeen

**In Memory of Michael Walters**  
Lynn Daly  
Sandra Feloni  
Lois Hurdle

**In Memory of Deegan Walton**  
Lori Walton

**In Memory of**  
**Rebekah Glynn Warnick**  
Andrew Offenbacher

**In Memory of Deborah Wechsler**  
Mark Finn  
Sue and Gordy Leff  
Donna Mitchell  
Dianne Rosenberg  
Lori and David Schechter  
Christine Wechsler

**In Memory of Jeffrey Weiner**  
Celia and George Leikin  
Trinity Health Oakland  
Education Team

**In Memory of Jody Wilson**  
Ann Arbor Roller Derby

## LIFETIME GIVING



### President's Circle

Cumulative contribution over a lifetime  
President: \$250,000+

Lorrie D'Angelo  
Maxine & Stuart Frankel Foundation  
Fred Mester  
Shirley K. Schlafer Foundation

### Visionary

Cumulative contribution over a lifetime  
Visionary: \$100,000+

Terri & Louis Jozefiak  
Rita Margherio  
Meyer & Anna Prentis Family  
Foundation  
Ed Snyder  
Kay White

### Luminary

Cumulative contribution over a lifetime  
Luminary: \$75,000+

Roberta Patt & Fred Fechheimer  
Philanthropic Fund

## Friends of Common Ground

Monthly donors who give through  
automatic monthly payments.

Circle The Block  
Michael and Janice Corrigan  
Kent Dickerson  
Melanie and Simon Esland  
Seth Faber  
Catherine McNamara  
Stephanie Phillips  
Sara Skandalaris  
Daniel Sterlini  
Angela Tiura

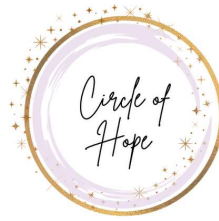


STEVE  
YOUNG

Steve Young passed away in November of 2024. He served as the Chief Information Officer for Common Ground, helping us navigate technology issues and software solutions.

He made an incredible impact on our organization and everyone who knew him. Steve is greatly missed both professionally and personally.





## Benefactor

Financial supporter who has donated  
\$10,000+ in the calendar year.

Nina Abrams  
Andersen Corporate Foundation  
Robert Budman  
City of Farmington Hills  
Lesle Cole  
Community Foundation for SE Michigan  
Fred Fechheimer  
Filmer Memorial Charitable Trust  
Lenore Hiscoe  
L&L Products  
Loomis, Sayles & Company, LLC  
Michigan Guild of Artists and Artisans  
Michigan Health Endowment Fund  
Molinello Family Foundation  
Roberta Patt  
Roberta Patt & Fred Fechheimer  
Philanthropic Fund  
Kay White

## Patron

Financial supporter who has donated  
\$5,000 - \$9,999 in the calendar year.

Community Foundation for NE Michigan  
Marjorie DeCapite  
Gary and Jan Dembs  
Fraternal Order of Eagles  
Janet Gray  
Guidant Global  
ITC Holdings  
John & Jean Dinan Foundation  
Kemp Klein Umphrey Endelman & May  
Foundation  
Knudsen Family Fund  
Bruce Liebowitz  
Magna International  
Proactive Technology Management  
Roscommon County Community Foundation  
T & P  
United Wholesale Mortgage

## Sustainer

Financial supporter who has donated  
\$1,000 - \$4,999 in the calendar year.

100 Women Who Care - Motown  
Acrisure  
Albert and Doris Pitt Foundation  
Alok & Seema Kumar Charitable Fund  
Julie and Lou Aronica  
Tracy and Jeff Aronoff  
Bank of Ann Arbor  
Beverly Elementary  
Richard Blumenstein  
Todd and Patricia Bradley  
John Brus  
Dorothy Bullitt  
Douglas Cale  
Donald and Susan Campbell  
Maureen and Steve Chaney  
Chief Financial Credit Union  
Christ Church Cranbrook  
City of Birmingham  
Clean Eat - Rochester Hills  
Jo Ann Cline  
Corewell Health  
Ian Costew  
Peggy Dahlberg  
Jane Dallas  
Debbie & John Erb Family Fund  
Mark DiVitto  
Eric Dobrusin  
Jeffrey Drejza  
Melanie and Simon Esland  
Eric Eshaki  
Face Foundrie- Birmingham  
First Independence Bank  
First State Bank  
Flagstar Bank - Birmingham Branch  
O'Neil Franso  
Glenn & Kim Liebowitz Philanthropic Fund  
Gretchen and Tom Anderson Family Fund  
Carolyn Haselwood  
Jerry Knoppow & Sharon Knoppow  
Charitable Fund  
Connie and Len Johnston

## Sustainer

Financial supporter who has donated  
\$1,000 - \$4,999 in the calendar year.

The June & Cecil McDole Charitable Fund  
Kapnick Insurance  
Jeffrey & Joaquina Kapuscinski  
KIG  
David Konop  
Susan Konop  
Dr. Luana Kyselka  
Laura & Mike Kerby  
Laugh & Learn Therapy  
Rhonda Laurencelle  
Emily Lewis  
Linda J. Zlotoff Philanthropic Fund  
Robert Livingston  
Francis & Joyce Lymburner  
Marsh & McLennan Agency  
Laurie Marshall  
Judith Matteson  
Catherine McNamara  
George & Charlotte Meyer  
Michael & Janice Corrigan Charitable Fund  
Mihalich Charitable Foundation  
Kaitlyn Pangrazzi  
Kathy Parks  
Pharmascript of Michigan  
Leslie Price  
Pure Leadership Consulting, LLC  
Heather Lynn Rae  
Richard M. Schulze Family Foundation  
Rochelle & Randolph Forester Foundation  
Rhea Sautter  
Franziska Schoenfeld  
Shari & Eric Dobrusin Philanthropic Fund  
Desmond Smith  
Target Community Relations  
United Way For Southeastern Michigan  
Lyle and Diane Victor  
Wilnot Wheeler  
Bert Whitehead  
Wood Family Charitable Fund  
Cathleen Zepelin



## A

Nina Abrams  
Accenture  
Rosanne Acciaioli  
Amy Achesinski  
Acrisure  
Judy & Joel Adelman  
Louie Ajini  
Rehab Alabduljabbar  
Cynthia Alain  
Albert & Doris Pitt Foundation  
Patricia Alessi  
Nicole Alessi-Forgach  
Susan Allan  
Alok & Seema Kumar Charitable Fund  
Kristi Amatuio  
AmeriHealth Caritas Services LLC  
Andersen Corporate Foundation  
Deborah Anderson  
Lambros & Mandy Andreopoulos  
Carolyn Andrews  
Angel Of Grace Awareness Bracelets  
Ann Arbor Roller Derby  
Anne Apking  
Stephen Applegate  
Craig & Marie Arnold  
Jennifer Arnold  
Julie & Lou Aronica  
Tracy & Jeff Aronoff  
Charlie Arton  
Arts Beats & Eats Foundation  
Robert Arzadon  
ASE  
Alecia Ashford-Taylor  
Jamie Ayers

## B

Kathryn Baker  
Jennifer Ball  
James Balmer III  
Karen Balow  
Mary Balsam  
Dora Baltrusaitis  
Bank of America Charitable Foundation  
Bank of Ann Arbor  
Colleen Barkham  
Marilynn Barnes  
Kevin Barton  
Paul Bastas  
Judith Bateman  
Yolanda Bates  
Kelly Baur  
Rosemary Bayer  
Char Beal

## B

Jerry and Gail Beale  
Mike Beauvais  
Jill Begerowski  
Nathan Benedict  
Jason Bennett  
Sanja Berhaovic  
Claire Bernacki  
Lauren Bernacki  
Chris Bernardo  
Beverly Elementary  
Bianca's Haven  
Arunava Biswas  
Sandra Black  
William Blackman  
Tonia Blondia  
Blue Cross Blue Shield of Michigan  
Richard Blumenstein  
Nicholas Body  
Mark Bole  
Daniel Bolterstrein  
Jane Bonanata  
Joanne S. Bonds  
Bosch  
Richard Bosler  
Jaclyn Bouchard  
Lisa Bouchard  
Melissa Bowman  
Dana Boyette  
Todd and Patricia Bradley  
Anne Bradley  
Peggy Bramlet  
Meaghan Brandow  
Charlotte Branum  
Matthew and Kathryn Bressette  
Emily Broder  
Brogan & Partners  
Cathleen Brook  
Katie Broome  
Andrea Brown  
Chet and Judy Brown  
Christina Brown  
Elaine and Bowden Brown  
Sara Brown  
Bridgette Brozovic  
Leah Brummitt  
Lisa Brummitt  
John Brus  
Budde Investments LLC  
Robert Budman  
Dorothy Bullitt  
James Bunker  
Margaret & Robert Burch  
Amanda Burger  
Amy Byrne

## C

Jacquelyne Cady  
Marcus Cairns  
Chris Caldwell  
Douglas A. Cale  
Eric Cale  
Nancy Cale  
Terrence Calloway  
Cambridge Homes, Inc.  
Donald & Susan Campbell  
Judith Caroselli  
Ralph and Debbie A. Castelli  
Todd Catchpole  
Pamela Catto  
Charlie Cavell  
Cedarbrook Senior Living  
Ashley Chambers  
Susan Chance  
Chaney Family  
Chief Financial Credit Union  
Andrea Chorkaluk  
Christ Church Cranbrook  
Jill Christie  
Judith and Howard Christie  
Irene Christy  
Stephanie Cibulka  
Circle The Block  
City of Birmingham  
City of Farmington Hills  
David Clapper  
Chris Clark  
Clean Eat - Rochester Hills  
Jo Ann Cline  
Lesle Cole  
Dan Collins  
Community Foundation for NE Michigan  
Community Foundation for SE Michigan  
Michael Coopersmith  
Corewell Health  
Mary Corrado  
Costco Wholesale Corporation  
Ian Costew  
Nancy Coyne  
Carl Cranberry  
Angela Cusmano  
Stephanie Czarnik

## D

Peggy Dahlberg  
Jane Dallas  
Lynn Daly  
Claire Danaher  
Norma Darr  
Dree Daugherty  
Mark A Davidoff  
Ellyn Davidson



## D

Donna Dawson  
Debbie & John Erb Family Fund  
Pamela Debono  
Marco L. DeCapite  
Allison DeCapite  
Dana DeCapite  
Marjorie DeCapite  
KJ Deighton  
Gary and Jan Dembs  
Howard & Terri Dembs  
Tim Dennis  
Mark Deprez  
Geraldyn Derry  
Detroit Country Day School  
Dell Dexter  
Kent Dickerson  
Brian M. Dietz  
Mark G DiVitto  
Bruce & Maria Dixon  
Eric & Shari Dobrusin  
Linda Dobrusin  
Mary-Bess Donovan  
Jeffrey Drejza  
Cheryl Duff  
Don Duke  
Carly Duncan  
Elizabeth Durrett

## E

Christy Ebbert  
Alice & Dr. Murray Ehrinpreis  
Sandra Eidelman  
Nanci and Allen Einstein  
Eli Lilly & Company  
Frank and Lisa Elias  
Rosemary & Todd Emerson  
Empowered Moms  
Susan Erichsen  
Gail Esker  
Melanie and Simon Esland  
Eric Esshaki  
eTitle Agency

## F

Seth Adam Faber  
Face Foundrie- Birmingham  
Lesley and Daniel Fairrow  
Bernadette Faith  
Fred Fechheimer  
Sandra Feloni  
Sue Ferris  
Filmer Memorial Charitable Trust  
Mark Finn  
First Independence Bank  
First State Bank

## F

Chris Fitzsimmons  
Steven Fladger  
Flagstar Bank - Birmingham Branch  
Arianna Fleming  
Nicholas Fleszar  
Carl & Mary Ann Fontana  
Chuck Forbes  
Rochelle Forester  
Bob Foster  
Foster Coffee Company, LLC  
Theresa Fougne  
Foundation for the Carolinas  
Four Seasons Garden Center  
Rosemary and Tom Fox  
Ronald and Margaret Franchi  
Molly Francis  
Peggy & Dennis Frank  
O'Neil Franso  
Fraternal Order of Eagles  
Fred A & Barbara Erb Family Foundation  
Petra Frey  
Daniel Fritz  
Nicole Fritz  
Kathleen Fulgenzi & James Lamoureux  
Dana Fuller

## G

Sharon Gadoth-Goodman  
Joseph Galasso  
Dara Ganoczy  
MarySheila Garin  
Christine & Joe Garofoli  
Jennifer Gavin  
Laura Gemellaro  
Genisys Credit Union  
Patrick M. George  
Tracy Gerbino  
Maxine Gerhard  
Kay Giacoletti  
Giarmarco, Mullins & Horton, P.C.  
Becky Gilbert  
Kathy Gleason  
Glenn & Kim Liebowitz  
Philanthropic Fund  
Mary Glidden  
Sheri Godman-Lumley  
Arnold Goldman  
Deborah Gollnitz  
Kertrina Gordon  
Marvin and Sylvia Gordon  
Kevin Gorman

## G

Laurie Gottman  
AnaMaria Gould  
Nicole Gramenos  
Janet Gray  
Danielle Green  
Alan Greene  
Greenleaf Trust  
Regina Greenway  
Gretchen & Tom Anderson Family Fund  
Ivy Grossman-Abrams  
Airika Grunwald  
Christopher Guddeck  
Guidant Global  
Janet Gumenick  
Gumenick Family Foundation  
Nicole Guza

## H

Ruth & Gary Haberkornhalm  
Gail Haffey  
Lori Hamer-Delmar  
Amanda & Tanner Hamilton  
Patrick Hannon  
George Haralampopoulos  
Sophelia Hargett  
Ron Harlow  
Marcia K. Harrington  
Randal Harris  
Julie Harrison  
Art & Jamie Hart  
Kathleen Hart  
Matthew Harthcock  
Rebecca Harwell  
Carolyn Haselwood  
Tammy Hatfield  
Jon & Joanne Hayes  
Larissa Heap  
Hearst Service Center  
Susan Heath  
Deborah Hecht  
Scott Hedges  
Judi Helm  
Nancy Henahan  
Ann Henson  
Michael & Sandra Hermanoff  
Mercedes S. Hershey  
Hertz Schram PC  
Michelle Hess  
Robert Hibbert  
Judith Hicks  
Michael Hicks  
Rob & Kelly Hillman  
Debbie Hirzel  
Lindsey Hirzel-Glassco  
Lenore Hiscoe  
Laurie Hix





## H

Barbara Hoffman  
Christine & Casey Hogan  
Malcolm R. Hohmann  
Jaime Hope, MD  
Kristine Hopfensperger  
Frank & Lori Horton  
Aileen Hoyle  
Kira Huffaker  
Lois Hurdle  
Ruth Hurvitz  
Jim Huttenlocher

## I

Art Ingraham  
Inner Spark Wellness Group  
Millie Irwin  
ITC Holdings  
Thomas & Janet Ivinson

## J

Christa Jackowicz  
Dave Jackowicz  
Dennis Jackowicz  
Diane Jackowicz  
Jessica Jackowicz  
Scott & Angie Janssen  
Susan Jarzembowski  
Jax Kar Wash  
Jay Must Family Fund  
Therese Jean  
Jerry & Sharon Knoppow Charitable Fund  
John & Jean Dinan Foundation  
Max Johnson  
Anastasia Johnston  
Connie & Len Johnston  
Sue Johnston  
Patricia Jones  
Terry & Louis Jozefiak  
Jumpscare Records LLC  
Kimberly Jurado

## K

Lee Kamphuis  
Kelly Kane  
Rachel Kapen  
Kapnick Insurance  
Jeffrey & Joaquina Kapuscinski  
Kathryn Reid Charitable Giving Fund  
Lawrence Katz  
Anthony Kaylin  
Carole Keller

## K

Joel & Betsy Kellman  
Kemp Klein Umphrey Endelman & May Foundation  
Laura & Mike Kerby  
Yasir Khogali  
KIG  
Shannon Kilgore  
Dave & Dana Kilroy  
Marvin & Maxine Kipp  
Kirco Manix Construction  
Laura Kirclin  
Deborah Kitson  
Donna Kjellstrom  
Nancy Klein  
Amanda Klimek  
Charles Knakal  
Allisyn Knese  
Beverly Knight  
Knudsen Family Fund  
David Konop  
Susan Konop  
Ruth Koppen  
Kimberly Kosch  
Jason Koshko  
John Kosik  
Greg & Adrienne Kozlowski  
Lance & Marguerite Krajacic  
Michele Krause  
Vickie & Rhein Krigner  
Michael Krivitsky  
Kroger Community Rewards  
Sabrina Krolicki  
Valerie Kushman  
Dr Luana Kyselka

## L

L&L Products  
Shirley Labrenz  
David & Sharon Lampke Fund  
Stephen & Yvonne Langdon  
Shane LaParl  
Tammy LaPrell  
Sheldon Larky  
Susan Larson  
Rhonda Laurencelle, PhD  
Mark Lavetter  
Mary Ann Lawler  
Mary Lebrato  
Tekisha Lee  
Sue & Gordy Leff  
Celia & George Leikin  
Dennis & Carole Lennox  
Nancy Lentini  
Brenda Lever

## L

Fran Levin  
Donald & Diane Levine  
Rick Lewandowski  
Yolanda Lewczuk  
Emily Lewis  
Julie Lichtenberg Stern  
Bruce Liebowitz  
Linda J. Zlotoff Philanthropic Fund  
Chris & Liza Liparoto  
Sandra Lipscomb  
Robert J. Livingston  
David & Marilyn Lochner  
Wendy Locicero  
Paul Loffreda  
Andrea Logan  
Jeff London  
Ron Long  
Loomis, Sayles & Company, LLC  
Melissa Lopez  
Michael & Heather Lossing  
Susan Louvar  
Annie Lowy  
Francis & Joyce Lymburner  
Christine Lynn

## M

Patricia Maceachern  
Magna International  
Liz Maier  
Steve & Sara Majoros  
Christina Makarov  
Jeff & Jean Maki  
Angela Malek  
Barry Malek  
Claudia Malone  
Ruby Marr  
Gwen & Robert Marsac  
David Marsh  
Marsh & McLennan Agency  
Laurie Marshall  
Charles Martin  
Patrick Martinez  
H. L. Mason  
Lisa Mason  
Cheryl Matas  
Judith Matteson  
Jennifer McArdle  
Colleen McBrady  
Katlyn McBrady  
Erin McBrien  
Jason McClellan  
Bruce T McConnell  
Margaret McKenzie  
Chris McLogan  
Brenda McMahon



## M

David & Sharon McMurray-Wurtz  
Cathy R. McNamara  
Jack & Rebecca McNaughton  
Andy Meisner  
Denise Elaine Melone  
Mental Illness Resource Association  
Laura Messing  
Method Development LLC  
Andrea Meyer  
Nancy Meyer  
Timothy Meyer  
George Jr. & Charlotte Meyer  
MI Psychiatry  
Marie Michael  
Michael & Janice Corrigan Charitable Fund  
Michigan First Credit Union  
Michigan Guild of Artists & Artisans  
Michigan Health Endowment Fund  
Aaron Mickle  
Microsoft Matching Gifts Program  
Mihalich Charitable Foundation  
Michal Mikrut  
Stephanie Miletich  
Jane Miller  
Karen Miller  
Kimberly Miller  
Michael Miller  
Jessica Milus  
Susan Mingay  
Cathy Mitchell  
Donna Mitchell  
Molinello Family Foundation  
Marie Monendo  
Gregory Moore  
Jose Rodrigo Morales Zayago  
David Morin  
Moss Law, PLC  
Jenn Moutinho  
Felix Mueller  
Elaine Mull  
Shaunalin Murphy

## N

Mary Nachazel  
Colleen Nagle  
Cynthia Nagle  
Daryl Nederveld  
Lois Neering  
Tracy Neil  
Mark Nelson  
Natalie Neph  
Tawana Nettles-Robinson  
Jamie Neubeck  
Sanford Nicholson  
North Congregational Church

## N

John Northcott  
Emily Norton  
Joel Nosanchuk  
Notre Dame Prep  
Novi High School HOSA

## O

Tom O'Connor  
Linda Odonnell  
Francis O'Donnell  
Andrew Offenbacher  
Angie Okonski  
Maury Okun  
Lauren Olane  
Judy & Ted Olds  
Linda Olejniczak  
Rosemary O'Malley Hoye  
Jackie Ong  
Amy Ordon  
Carol Ordon  
Ema Osaki-Kim  
Molly O'Shea  
Doris Ostrowski  
Ryan O'Toole

## P

Ashley Page  
Mary Palmisano  
Richard Panciocco  
Kaitlyn Pangrazzi  
Anne Parisot  
Kathy Parks  
Robert Parrish  
Sarah Passow  
Purvi Patel  
Vicky Patrick  
Roberta Patt  
Rhoda Paull  
Kia Pavloff  
Leon and Linda Pedell  
Carolyn Pelletier  
Tracey Pelletier  
Jerry Pelton  
Alexandra Perkins  
Pharmascript of Michigan  
Stefanie Phillips  
Janette Phillips  
Tim Pierce  
Chaviva Pincus  
Joyce Pippel  
Barbara Plants  
Melissa Plaskey

## P

Jane Polan  
Robin L Pospisil  
Gwen Prais  
Christina Pratrnicki  
David B. Price  
Leslie C. Price  
Linda Price  
Mary Prisciandaro  
Proactive Technology Management  
Pulte Family Charitable Foundation  
Pure Leadership Consulting, LLC  
Kristen Pursley

## R

Hon. A. Rocky Raczowski  
Devin Radcliffe  
Heather Lynn Rae  
Stuart Raider  
John Randle Sr.  
Nicholas Ranke  
Suzanne Rashid  
Raymond and Louise Rau  
Carol Rearick  
Julie Reed  
Anne Regalski  
Jeff Reiter  
David Rever  
Jay Reynolds  
Leah Reynolds  
Debra Rice  
Rosemary Ricelli Scheidt  
Deanna Richard  
Richard M. Schulze Family  
Foundation  
Roland Richards  
William Richards  
Marcia Riemer  
Mark Riley  
Peter Risberg  
Jan & Eva Rival  
Colette Rizik  
Jade & Gary Robb  
Roberta Patt & Fred Fechheimer  
Philanthropic Fund  
Julie & John Roberts  
Xavier Robertson  
Peter Robinson  
Karen Rock  
Kelly & Michael Rodgers  
Ronald Rodriguez  
Sabath Rodriguez  
Jean Rodriguez  
Natalie Rodriguez-Quintana  
Madison Rogers  
John Rogin



## R

Brian Rolfe  
Roscommon County Community  
Foundation  
Dianna Rose  
Dianne Rosenberg  
Anthony Rosenblum  
Ellen Rosenthal  
Michael Ross  
Susan & Richard Roth  
Jason Rowe  
Royal Oak Leprechauns  
Royal Oak Schools  
JJ Rubenstein  
Tricia Ruby  
Joseph Rucinski  
Christine & Dennis Ruen  
Brian Ruppel

## S

Wendy Saigh  
Lisa Samerdyke  
Tammy Sandlin  
Matthew Santala  
Janet & George Sarkos  
Jeffrey Saunders  
Rhea Sautter  
Kelly Savage  
Lorie Savin  
Jamie Saylor  
Mary Scarchilli  
Robert Scharff  
Lori & David Schechter  
Franziska I Schoenfeld  
Leigh Schultenover  
Kurt Schultz  
Robert Schulz  
Justin Schupp  
Aaron Schwam  
Robin Schwartz  
Kevin Scott  
Scott Serr  
Shari & Eric Dobrusin  
Philanthropic Fund  
Mike Shehadi  
Wendy Shepherd  
Robert "Bud" Sherman  
Ronald Sherman  
Kamal & Yasmine Shouhayib  
Janice Showell  
Rise Siegel  
Michele Simpson  
Sara Skandalaris  
Amanda Skrzypchak

## S

Sharon Slaski  
Mallory Slusser  
John Smentowski  
Larry Smentowski  
Lisa Smiadak (aka Lisa Reedy)  
Desmond Smith  
Eileen & Dave Smith  
J Taylor Smith  
Kim Smith  
Coleen Sootsman-Eicher  
Alexa Sorant  
Dean & Anne Sousanis  
Larry Spaulding  
Lillian Spencer  
Michelle Spognardi  
Sriram Srinivasan  
St. Irenaeus Parish Catholic Church  
St. James Episcopal Church  
St. Patrick's Episcopal Church  
Sophia Stachurski  
Carol Stacy  
Victoria Starr  
Antoinette Starrs  
Patricia Steding  
Sharon Steelman  
Daniel Sterlini  
Steve Parks Memorial Foundation  
Donald Stevens  
Colette & Tom Stimmell  
Kate Stocker  
Daniel Stockson  
Patricia Stoltz  
Delashea Strawder  
Angela Strickland  
Niki Sturm  
Shawn Swales  
Sharon Szegedy

## T

T & P  
Dorothy Tait and John V. Carr  
Target Community Relations  
Nora Tavalieri  
Michael Taylor  
Tamara Tazzia  
Domenic Telles  
The Ben & Colleen Perdock Fund  
The Dobrusin Law Firm, PC  
The Jewish Fund  
The June & Cecil McDole Charitable Fund  
The Kolasa Foundation  
The Non-Profit Personnel Network, Inc.

## T

Christine Thornton  
Thrivent Choice  
Colleen Tillemma  
Angela Tiura  
T-Mobile My Rewards  
Maria Tobar  
Craig Tobey  
Top Notch Alliance Group  
Zachary Topkis  
Elaine Torossian  
Adrianna Touma  
Treasurer's Coffee Club  
Meghan Trezies/Pelletier  
Barbara Trigger  
Danielle Trigger  
Camila Trindade da Silva  
Trinity Health Oakland Education Team  
Laura Trombley  
Rebecca Tron  
Trotters Pointe Sub Division  
Karlynnne Tucker  
W.A. Tuomaala  
Tina Turner  
Elaine Tuttle  
Regina Tyler

## U

Stanley Ulman  
United Kingdom Online Giving  
Foundation (UKOGF)  
United Way For Southeastern Michigan  
United Way of Greater Cincinnati  
United Way of Metropolitan Dallas  
United Wholesale Mortgage

## V

Carin & Wim Van Acker  
Patricia Van Loo  
Stephen VanderVeen  
Colleen Varma  
Matthew Vazana  
JJ Vèlez  
Sue VerHage  
Lyle & Diane Victor  
Noel Villajuan  
Carolyn Vosburg Hall

## W

Ann Wagner  
Dan Wagner  
David Wagner





## W

Tina Wagner  
Kathleen & Jon Walgren  
Catherine A Walker  
Jarred Wallace  
Martin Walsh  
Joel Walter  
Julie Walters  
Lori Walton  
Michael Wasielewski  
James Watry  
Priscilla Watts  
Darryl Watts  
Kara Wawrowski  
Diane E. Wayne  
We Laugh & Learn  
Christine Wechsler  
Sheldon Wechsler  
Teresa Wehrwein  
Dana Weidinger  
Suzanne Weinert  
Mary Ann & Danny Weingarden  
Lora Weingarden  
Harold Weiss  
Lisa Wess  
Robin Westenberg  
George Westerman  
Wilmot & Wanda Wheeler  
Kay White  
Alyson WhiteBert Whitehead  
Robert Wickman  
Jessica Widzinski  
Dianne Widzinski  
Robin Wilder  
Marc Wiliford  
Dian Wilkins  
Cheryl & Todd Wilkinson  
Wilkinson Foundation  
Brandy Willemse  
Mary Williams  
Gene Williams  
Terry Willingham  
William Wilson  
Wines For Humanity  
Robert Wittenberg  
Katherine Wood  
Joanna Wood  
Wines For Humanity  
Douglas Wright  
Anna Wrobel  
Jordan Wyant

## X

Xemplar Club of Farmington & Farmington Hills

## Y

Christopher Yankoulides  
Julie Smith Yolles  
Howard Young  
Oscar Ytem

## Z

Barbara Zack  
Andy Zaleski  
Brian Zech  
Tamara Zelinski  
Cathleen S. Zepelin  
Kim Zernec  
Richard Ziegler  
Leonard Zucker

## In Kind Donors

Catherine Adamkiewicz  
Janet Alford  
Allie  
Apple and Thistle  
Julie Aronica  
Jamie Ayers  
Barton's Art Loft  
Amy Beeler  
Jerry and Carole Berhorst  
Beth Schulte Ceramics  
Big Mitten Lino Cuts  
Todd Bradley  
Anthony Brass  
Linda Chamberlain  
Diane Coady  
Savanah Conrad  
Molly Cooke  
Marjorie DeCapite  
Lesley Fairrow  
Karl Feng  
Figures of Wood  
Paul Fletcher  
Daniel Gellings  
Reese Goldberg  
Leo Hong Mao  
Dominique Hopf  
Hypknotica  
Karri Jamison  
JMW Design  
Jane Johnson  
Michael Karonias  
Kat Zinn Illustrations  
Jan Kaulins  
Jennifer Krcic  
Oscar Matos Linares  
Julia MacLachlan  
Petrus Martens  
David McAlpine

## In Kind Donors

Catherine McNamara  
Jessica McPeck  
Nature By Fiber  
David Nelson  
Deborah O'Keeffe  
Open Hearts Foundation  
James Parker  
Purvi Patel  
Annette Poitau  
Pooka Queen  
Laura Rangos  
Kim Rhoney  
Sato Fine Art  
Shinichi Sato  
Wendy Scarbrough  
Kristal Serna  
Seven Magpies Pottery  
Kathy Sheldon  
Mona Sokoloff  
Sarah Stanton  
Daniel Sterlini  
Tessa Sherman Art  
The High Bead  
The Latent Log  
The Toy Tree  
Paul Toepp  
Allison Vasquez  
Kathleen Walgren  
Wear Molly Art  
Tom Wehner  
Kathleen Murphy Willer  
Chuck Wimmer  
Steven Wirtz  
Patricia Wylie

2025

## Events & Fundraisers



**May 17**

Ride 2 End Suicide

**September 13-14**

Birmingham Street Art Fair

**October 24**

Celebration of Hope

For more information, visit the

Events page on our website:

[commongroundhelps.org/events/](http://commongroundhelps.org/events/)

## BOARD OF TRUSTEES

Fiscal Year: 2023-2024

Julia Aronica, Board Chair  
Eric Dobrusin, Board Chair-Elect  
Rhonda Laurencelle, PhD, Secretary  
Don Campbell, Treasurer  
Kay White, Immediate Past Chair

Tracy Aronoff  
Katie Bressette  
Judy Christie  
Mark DiVitto  
Lesley Fairrow  
Fred Fechheimer  
Mandy-Cale Hamilton  
Jaime Hope, MD  
Cathy McNamara  
Greg Moore  
Tawana Nettles-Robinson  
Purvi Patel  
John Randle, Sr.  
Lisa Samerdyke  
Noel Villajuan  
Kathy Walgren  
David Wood Jr., MD

## EXECUTIVE LEADERSHIP

Heather Rae, President & CEO  
John Head, DO, Chief Medical Officer  
Jeff Kapuscinski, Chief External Relations Officer  
Vickie Krigner, Chief Financial Officer and  
Administrative Officer  
Gary Robb, Controller  
Janet Sarkos, Chief Crisis Operations Officer  
Leigh Schultenover, Chief Experience Officer

## ADVISORY BOARD

Richard Astrein  
Sherriff Michael Bouchard  
Jerry Cavellier  
Gary Dembs  
Howard Hertz  
Rita Margherio  
John Roberts  
Shelley Roberts  
Kay White

---

## LOCATIONS

### Resource & Crisis Center

1200 N. Telegraph Road  
Building 32 E  
Pontiac, MI 48241  
800-231-1127

### Administrative Office

30200 Telegraph Road  
Suite 300  
Bingham Farms, MI 48025  
800-231-1127

### Rochester Hills Resiliency Center

1970 E. Auburn Road  
Rochester Hills, MI 48307  
248-451-2610

### United Resiliency Center

1504 E. Grand River  
Suite 200E  
East Lansing, MI 48823  
517-853-1070

30200 Telegraph Road, Suite 300, Bingham Farms, MI 48025  
[Commongroundhelps.org](http://Commongroundhelps.org)